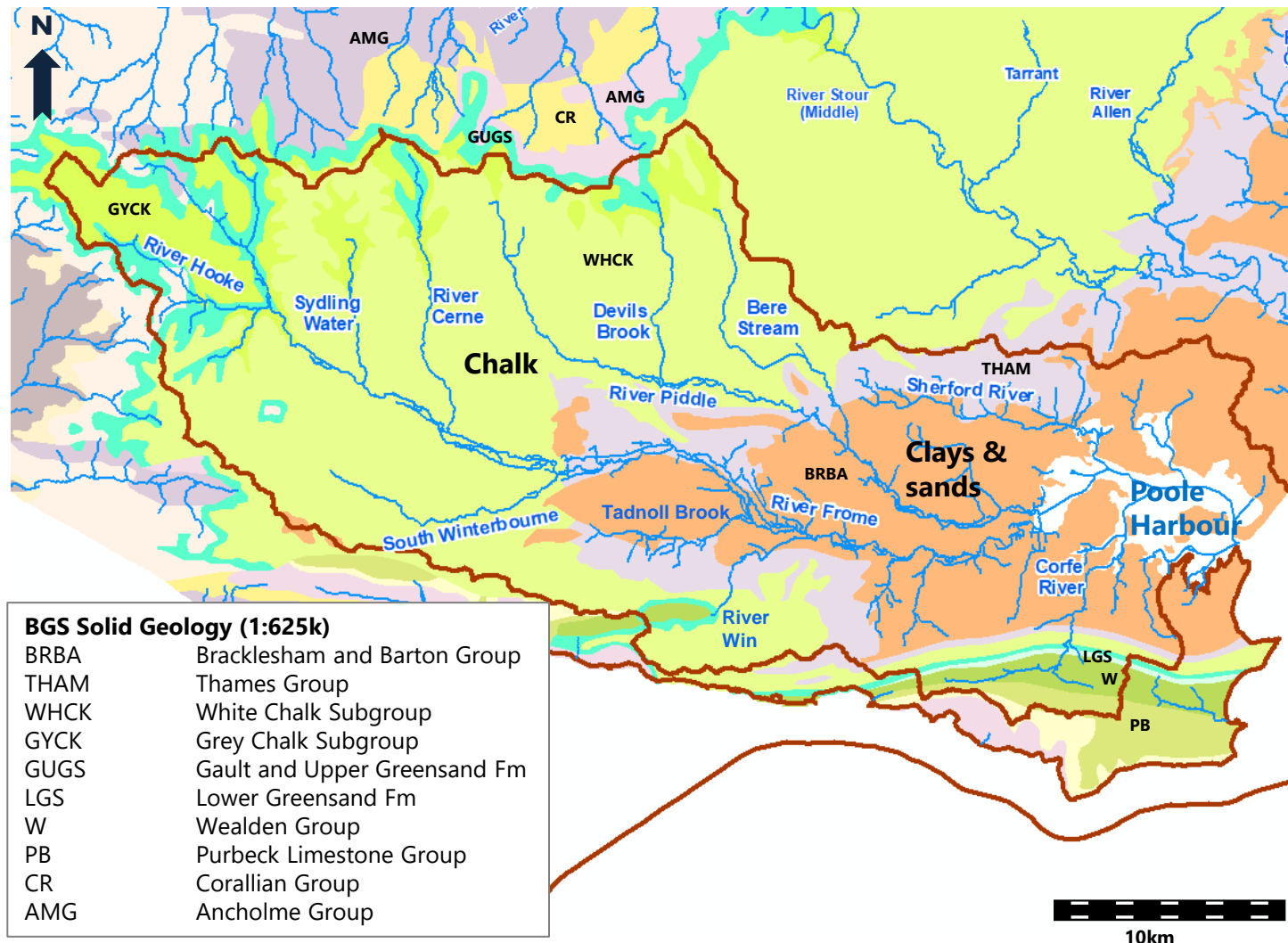




Environmental Destination

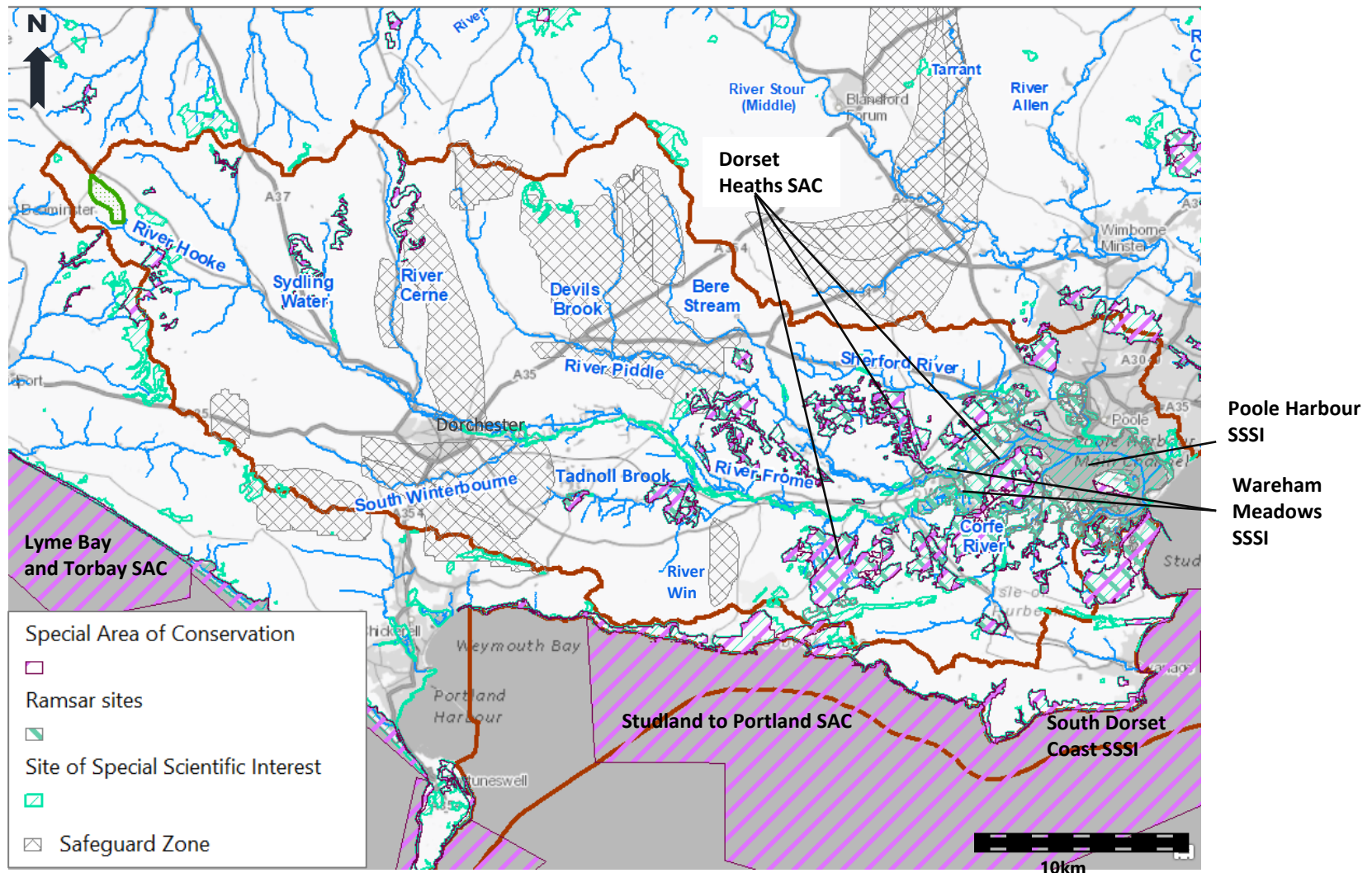
Figures accompanying Annex B: Poole Harbour Rivers pilot catchment plan to increase future water supply and low flow environmental resilience

Figure B2.1 Poole Harbour catchment: rivers and geology



Contains British Geological Survey materials © UKRI [2022]. Contains Ordnance Survey data © Crown copyright and database right [2022].

Figure B2.2 Poole Harbour Rivers: Designated sites and Drinking Water Safeguard Zones



© Natural England copyright. Contains Ordnance Survey data © Crown copyright and database right [2022].

Figure B2.4a Poole Harbour catchment: Surface Water Abstraction by Sector (total, MI/d)

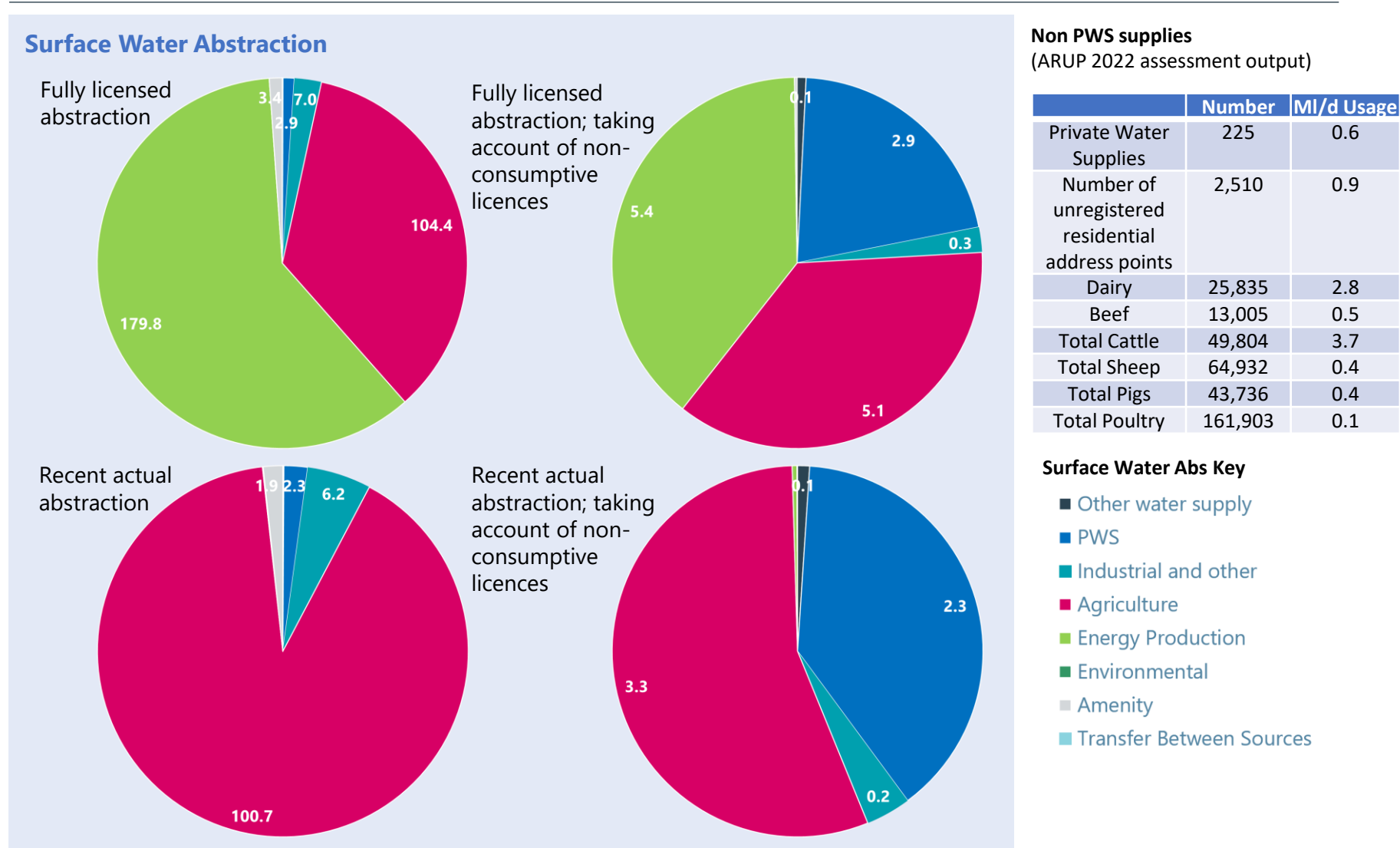


Figure B2.4b Poole Harbour catchment: Groundwater Abstraction by Sector (total, MI/d)

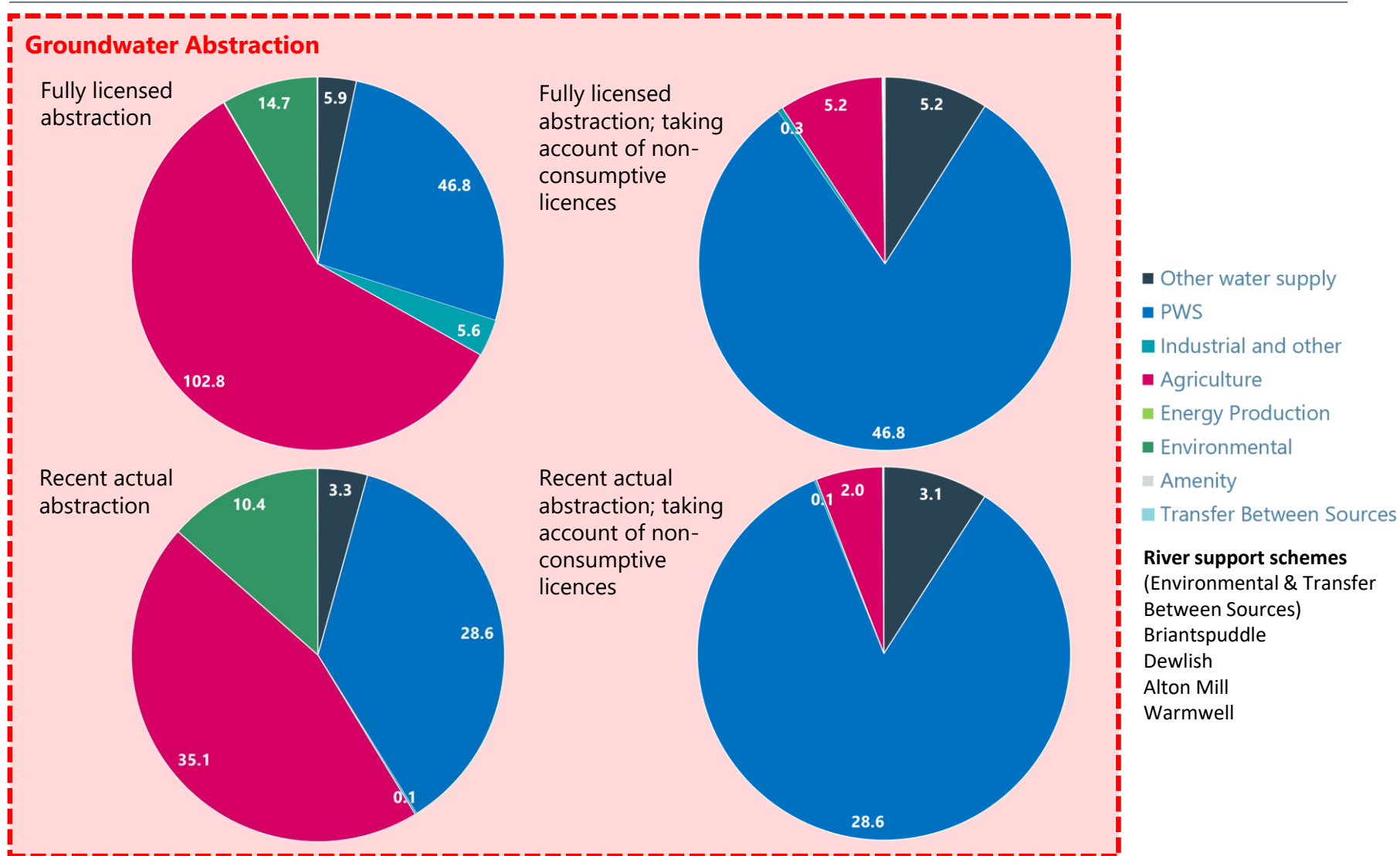
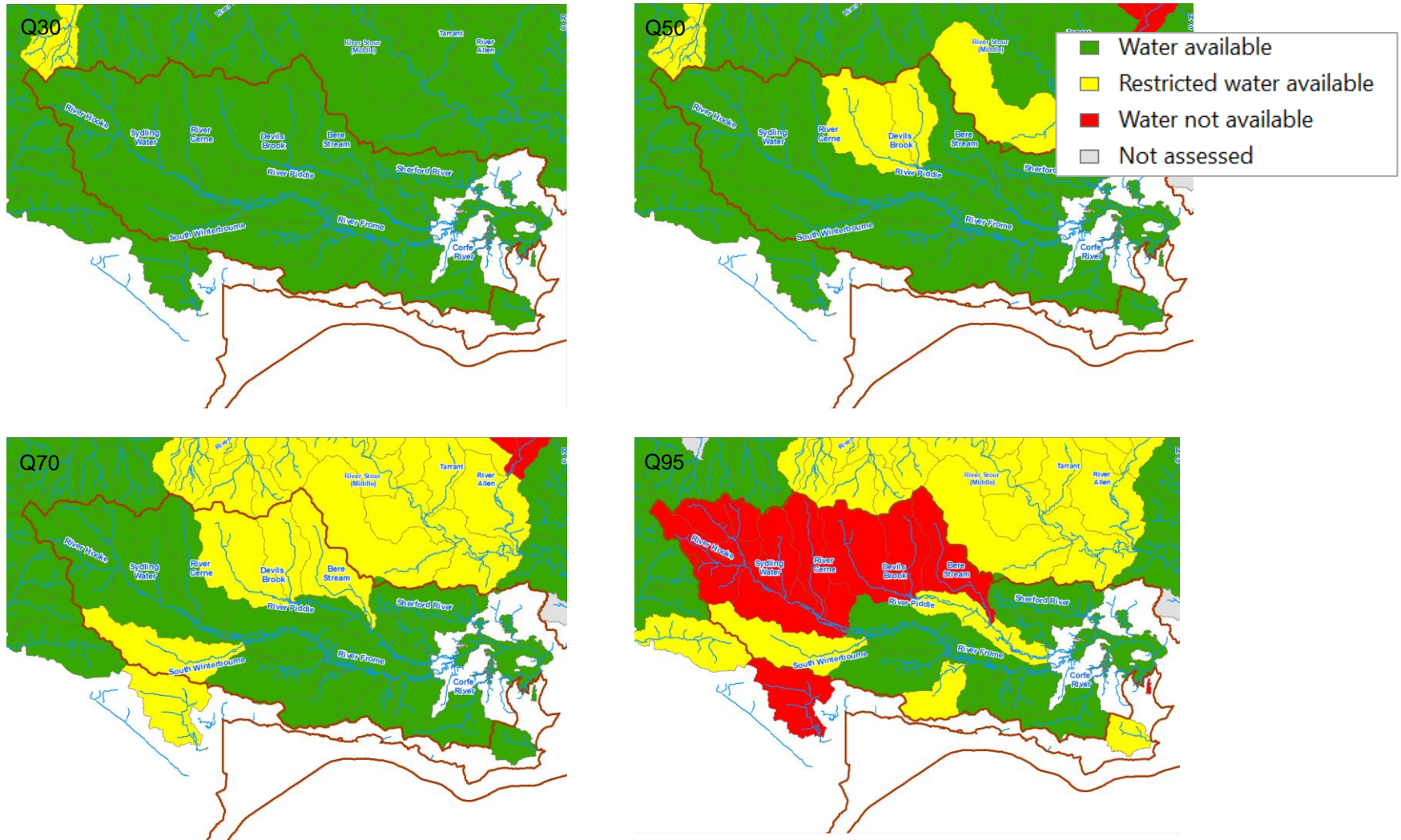
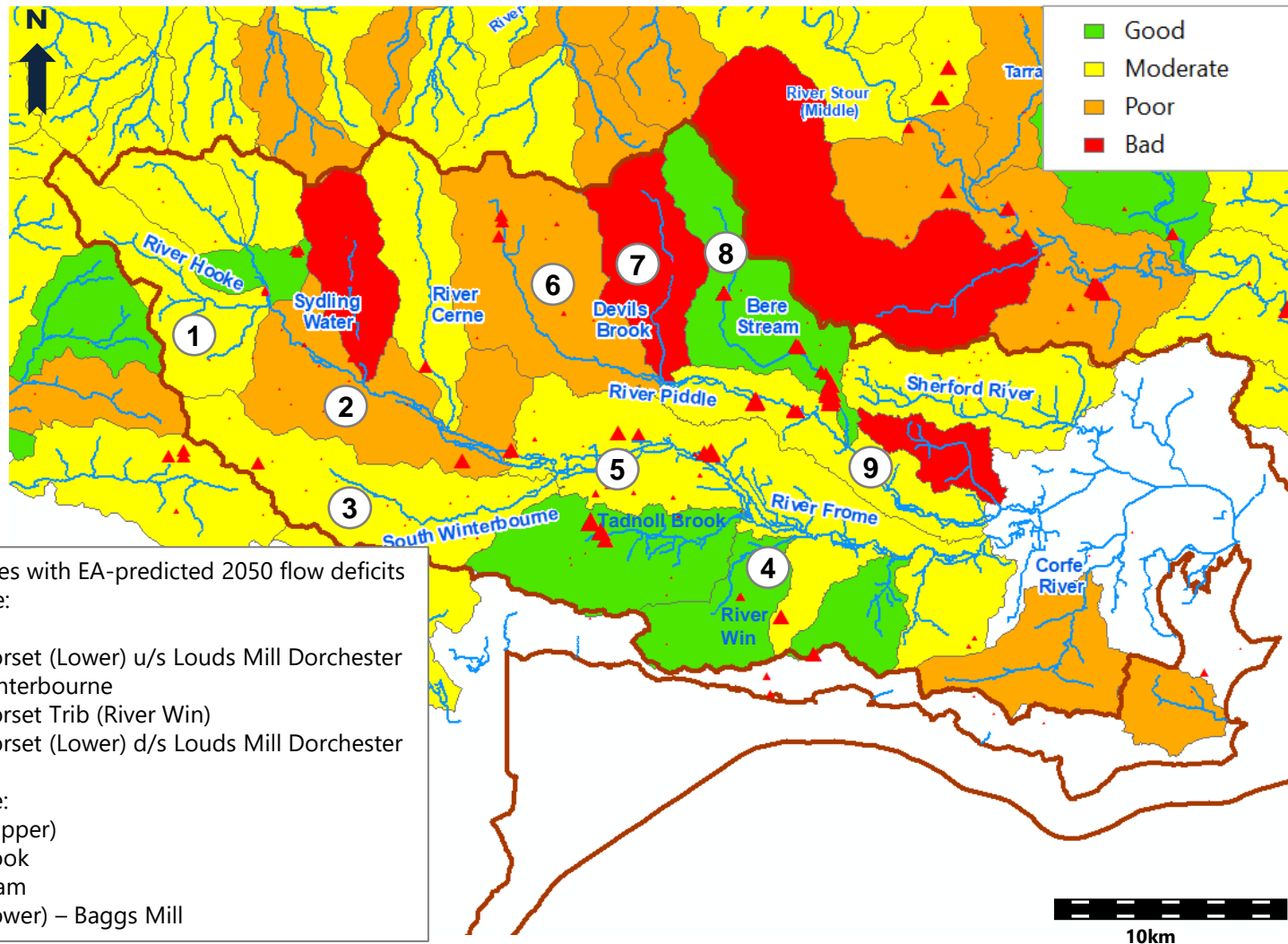


Figure B2.5 Environment Agency water resource availability at Q30, 50, 70, 95 (Cycle 2, last updated 16 April 2021)



Contains public sector information licensed under the Open Government Licence v3.0. © Crown Copyright 2022

Figure B2.7 WFD water body ecological status (Cycle 2, 2019)



Water bodies with EA-predicted 2050 flow deficits
 River Frome:
 1 Hooke
 2 Frome Dorset (Lower) u/s Louds Mill Dorchester
 3 South Winterbourne
 4 Frome Dorset Trib (River Win)
 5 Frome Dorset (Lower) d/s Louds Mill Dorchester

River Piddle:
 6 Piddle (Upper)
 7 Devils Brook
 8 Bere Stream
 9 Piddle (Lower) – Baggs Mill

Contains public sector information licensed under the Open Government Licence v3.0. © Crown Copyright 2022

Figure B2.8 Recent Actual environmental flow surpluses & deficits at Baggs Mill (Piddle) through 1976 drought showing need for low flow support or storage

River Piddle at Baggs Mill **Natural** and **Recent Actual** Flows with EFI ASB3 **Deficit** and **Surplus**

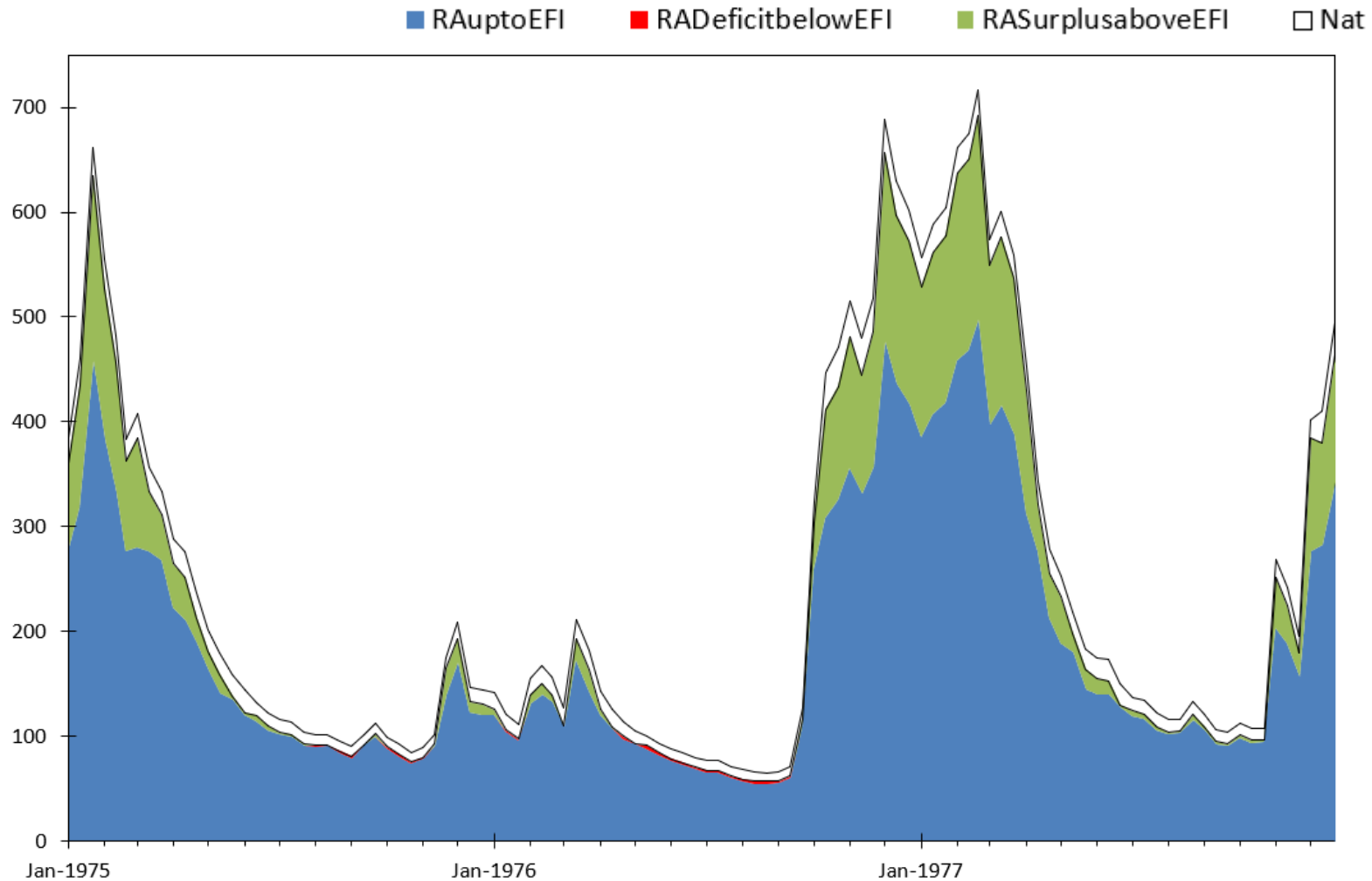
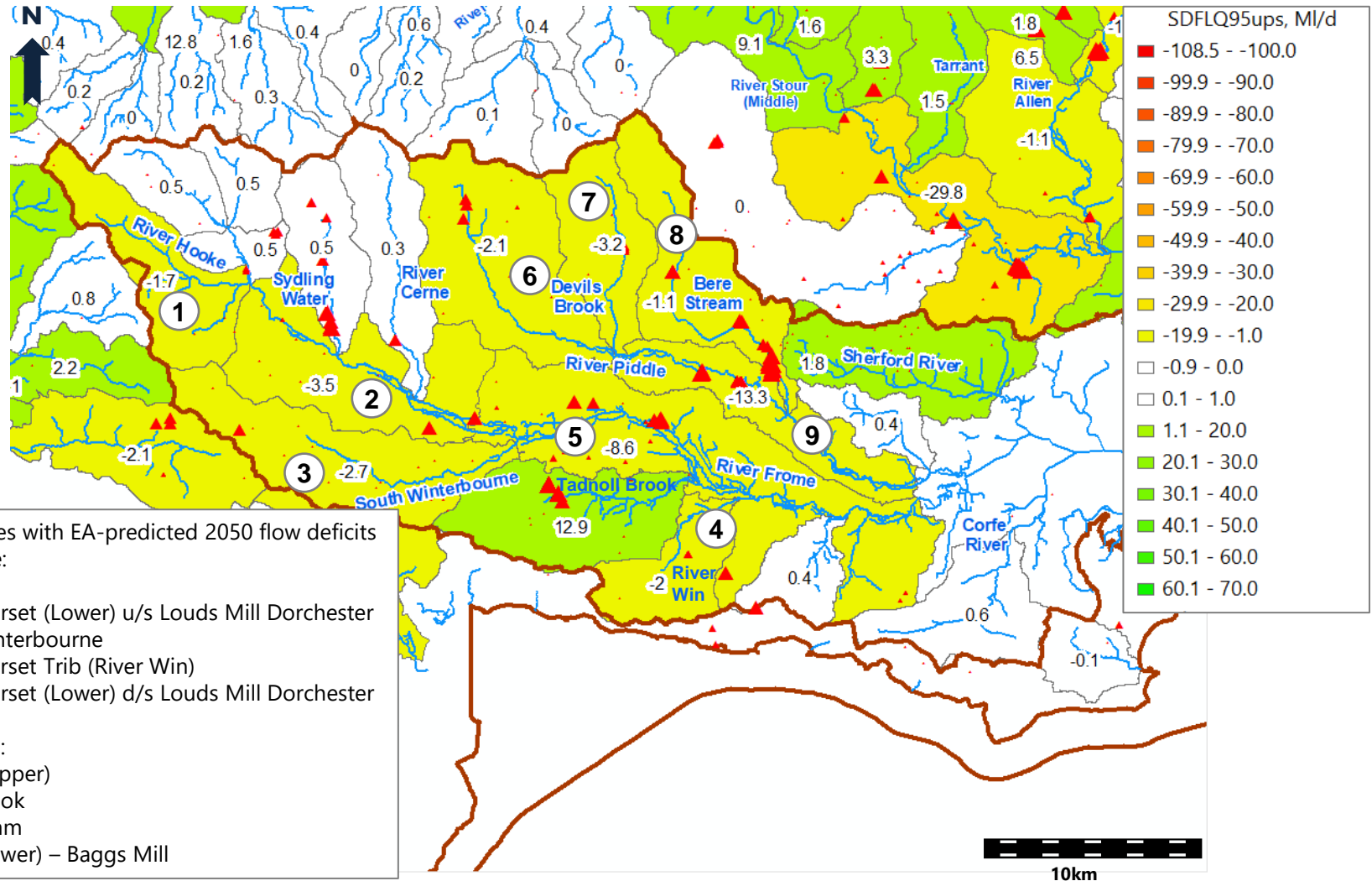


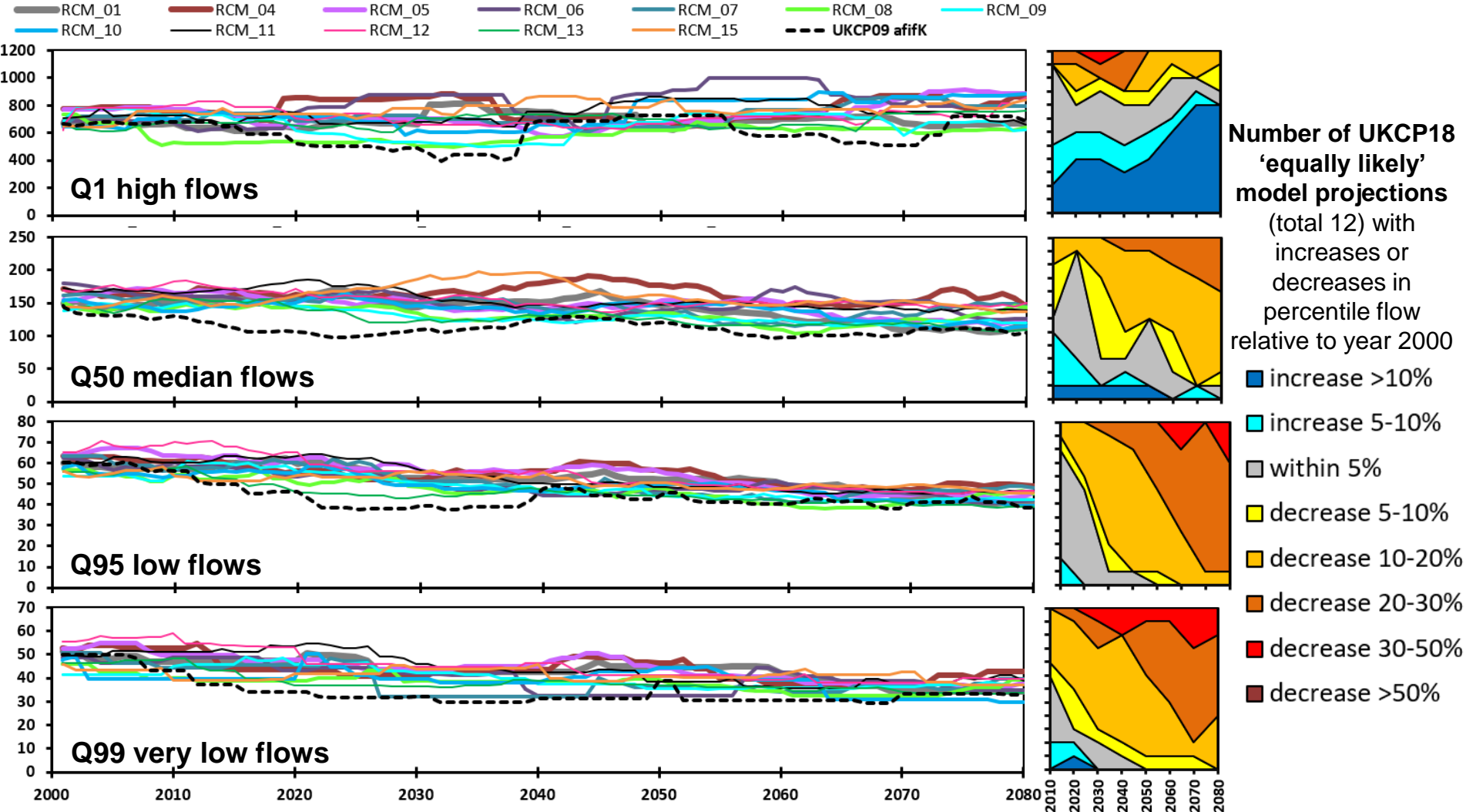
Figure B3.1 EA predicted fully licensed 2050 flow surpluses and flow deficits (MI/d) for water bodies under Q95 low flow conditions (enhanced scenario)



Data from EA's National Framework modelling in 2020

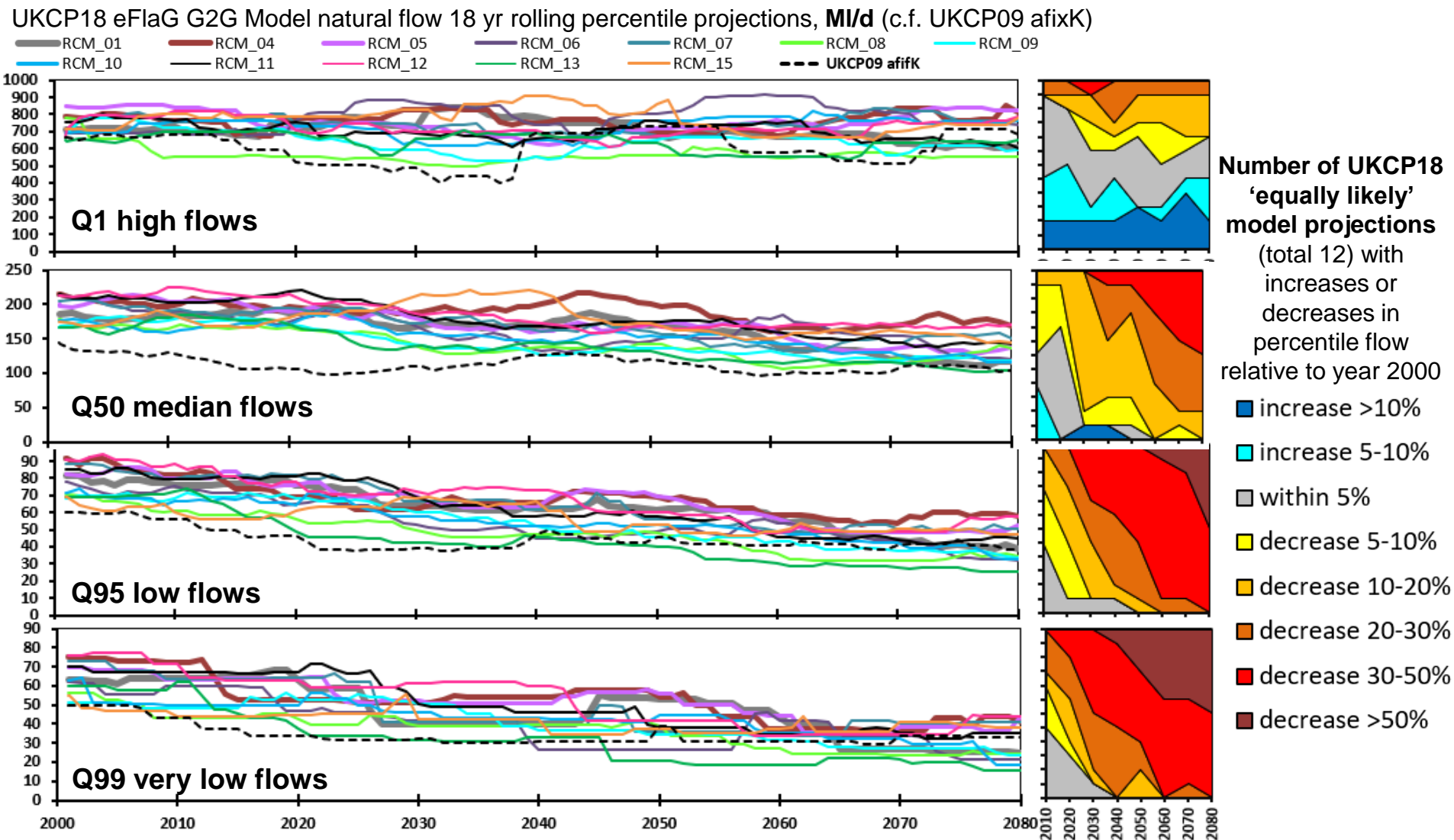
Figure B3.2 Flow changes expected due to climate (Piddle at Baggs Mill): Projections from UKCP18 climate & PDM gauge-calibrated river flow models

UKCP18 eFlaG PDM gauge-calibrated model flow 18 yr rolling percentile projections, **MI/d** (c.f. UKCP09 afixK)



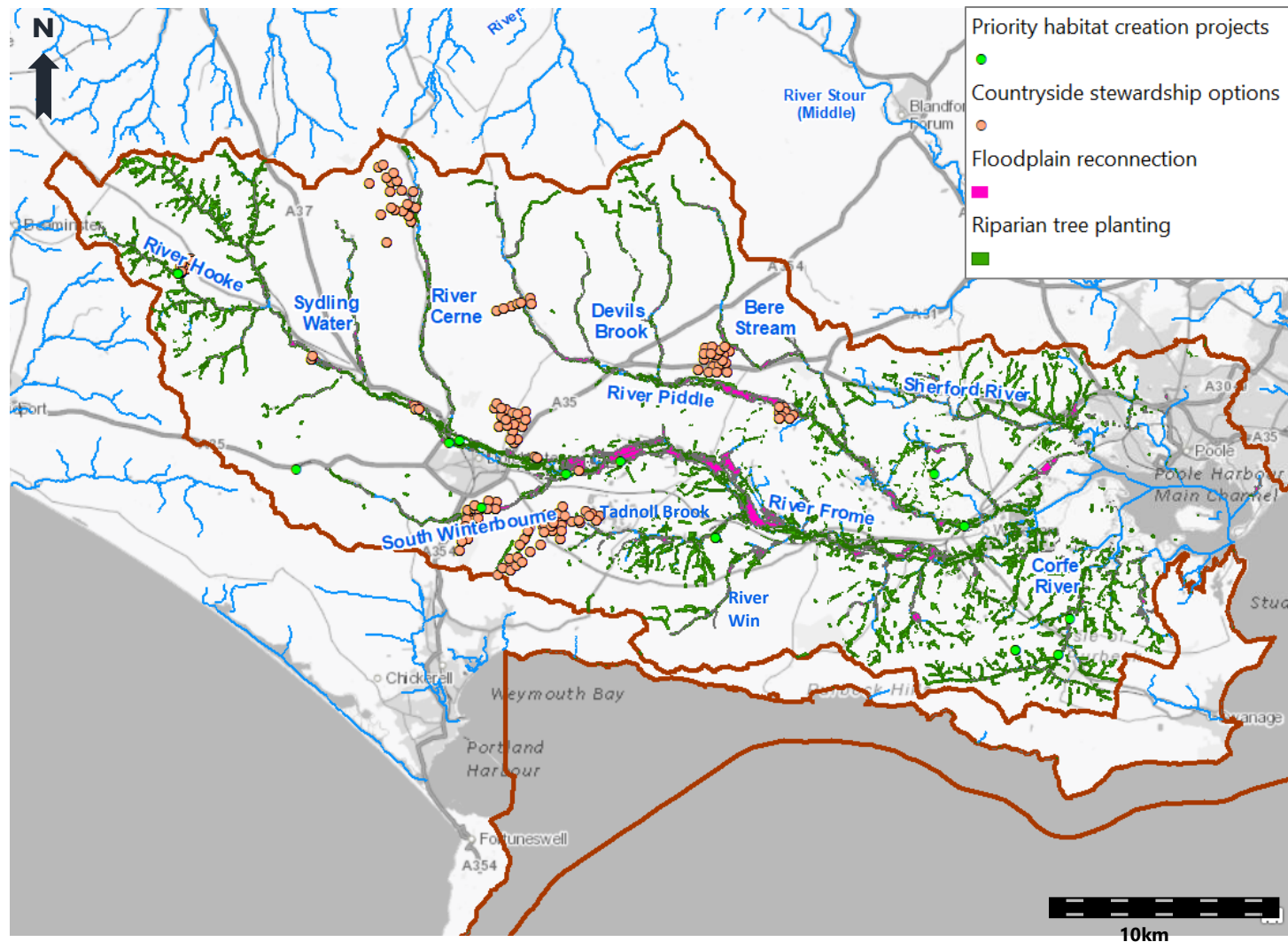
Data source: flows from 12 possible UKCP18 regional climate models (with UKCP09 afixK natural projection for comparison): <https://eidc.ac.uk/>

Figure B3.3 Flow changes expected due to climate (Piddle at Baggs Mill): Projections from UKCP18 climate & G2G national natural river flow models



Data source: natural flows from 12 possible UKCP18 regional climate models (with UKCP09 afixK natural projection for comparison): <https://eidc.ac.uk/>

Figure B4.1 Poole Harbour Rivers catchment CaBA opportunity mapping



Data downloaded June 2021 from Catchment Based Approach Data Hub website

Figure B4.2 Short term 2030 catchment measures: Poole Harbour Rivers catchment

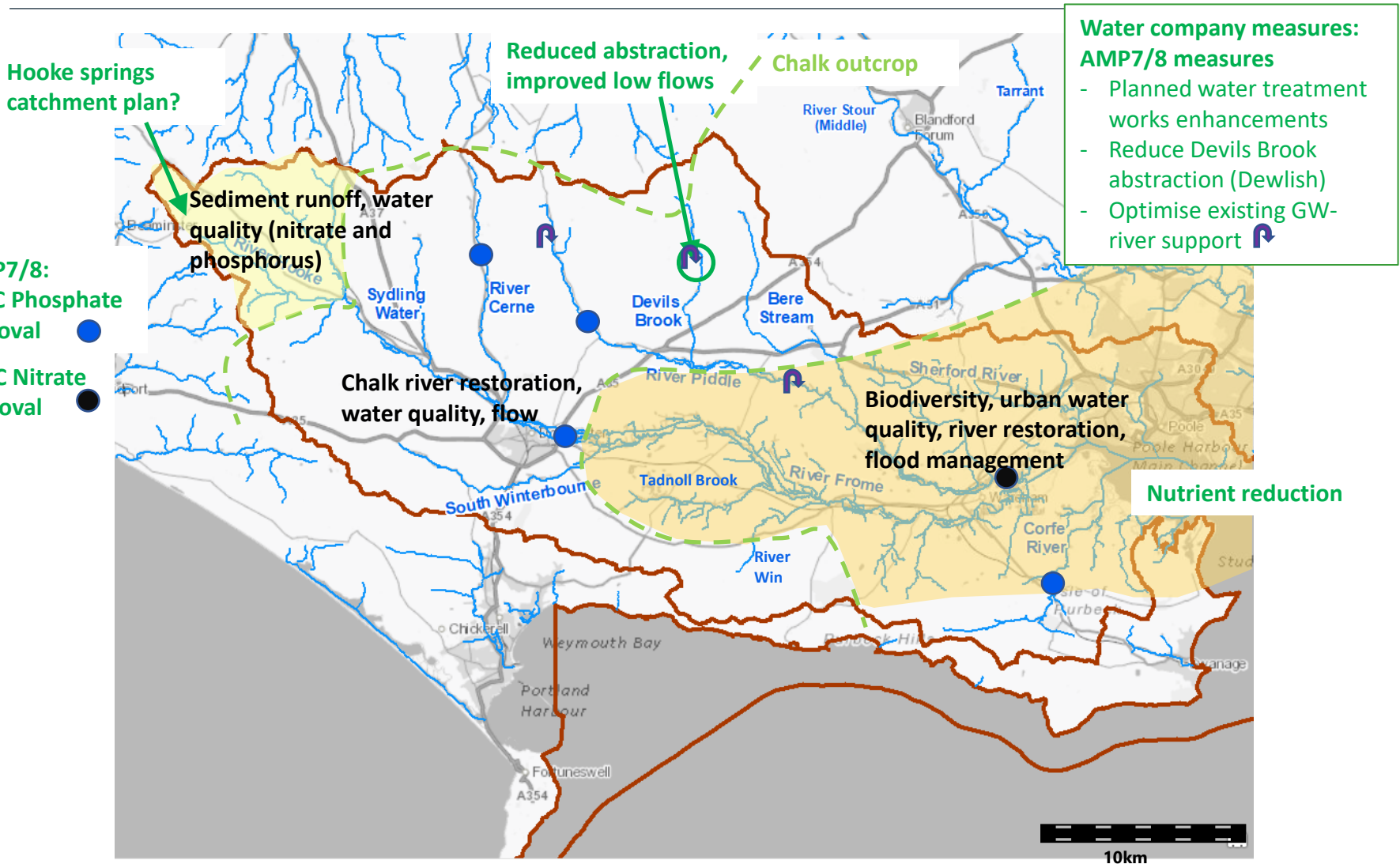


Figure B4.3 Medium term 2040 catchment measures: Poole Harbour Rivers catchment

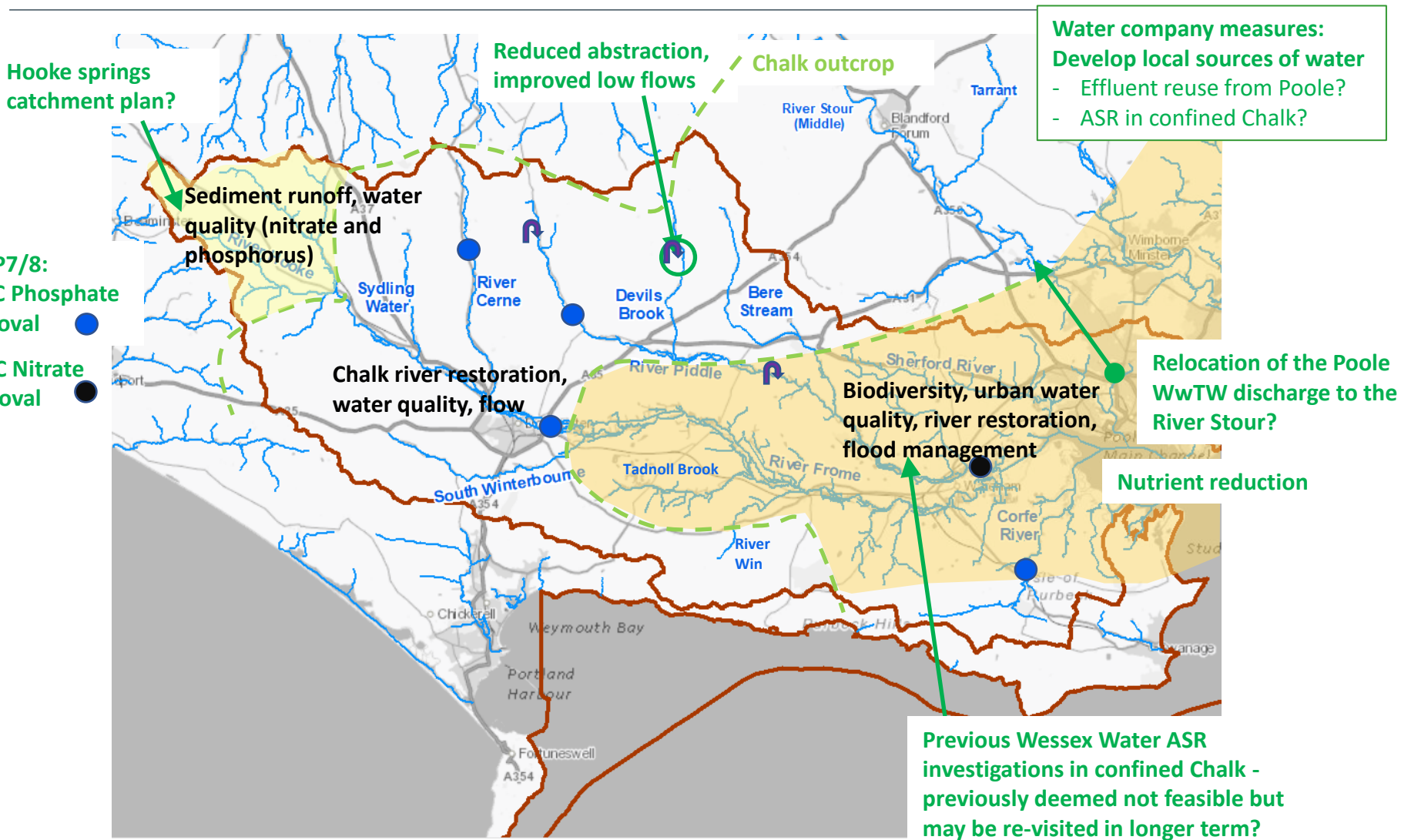


Figure B4.4 Longer term 2050 catchment measures: Poole Harbour Rivers catchment

