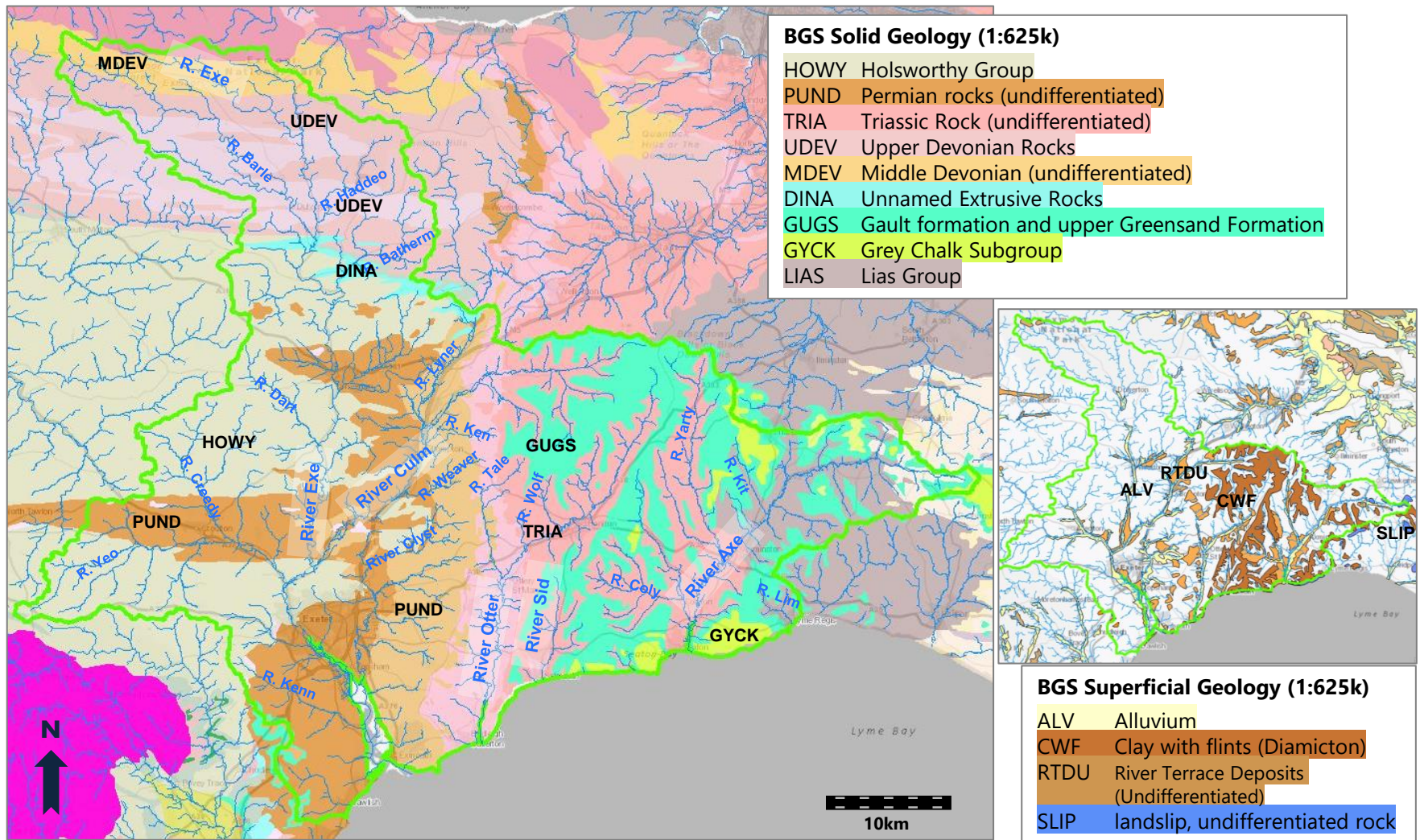




Environmental Destination

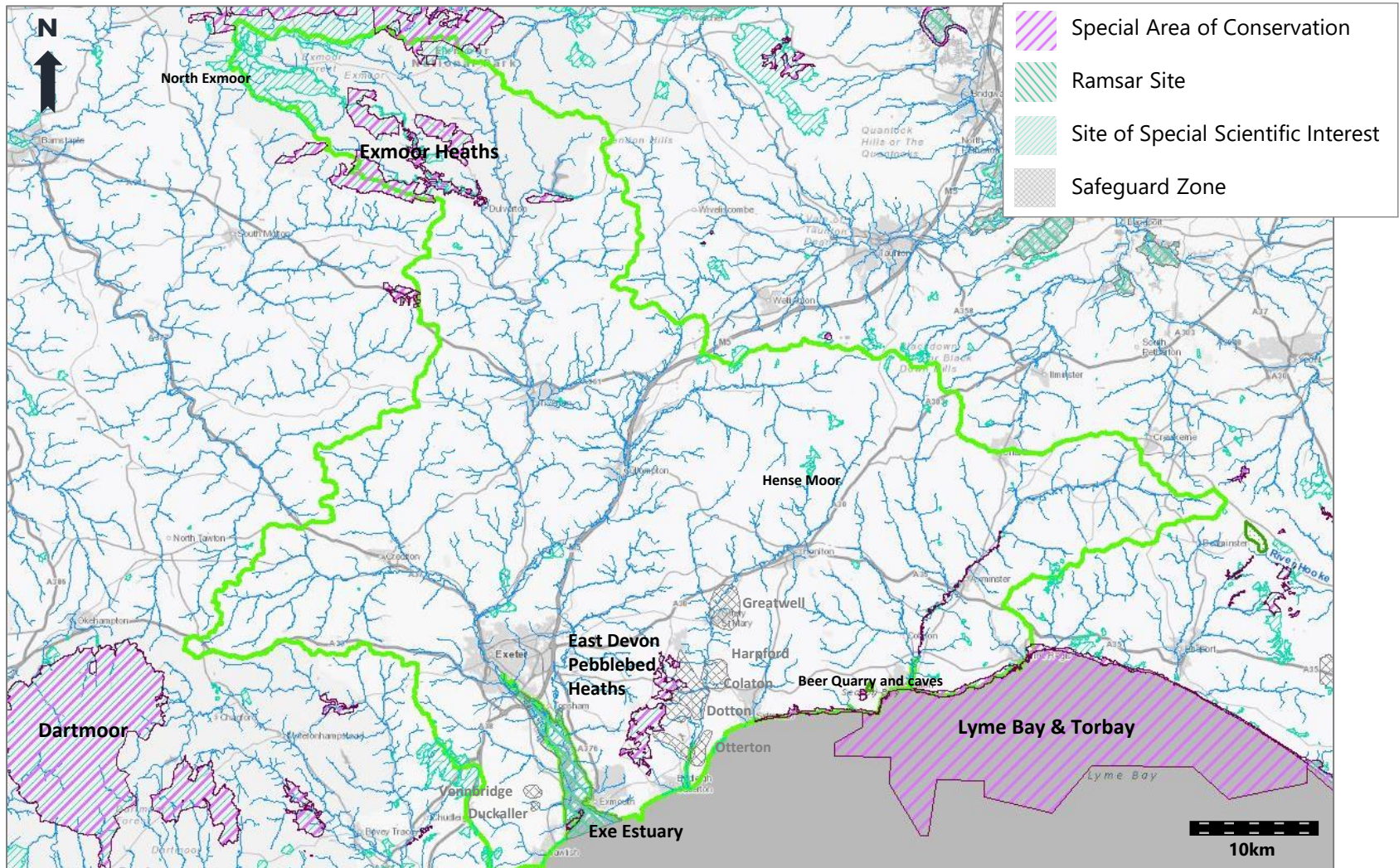
Figures accompanying Annex E: East Devon pilot catchment plan to increase future water supply and low flow environmental resilience

Figure E2.1 East Devon catchments: Rivers and Geology



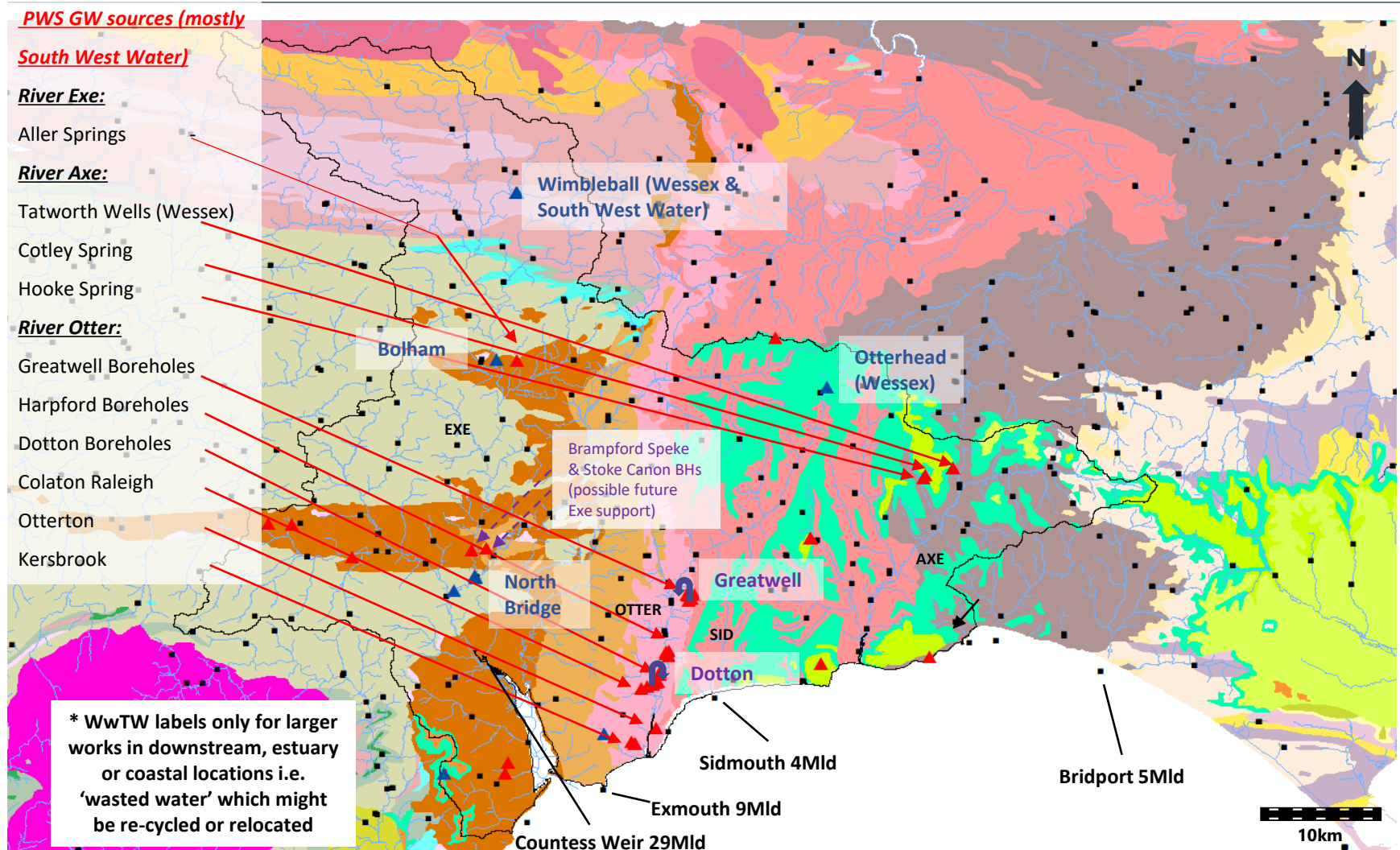
Contains British Geological Survey materials © UKRI [2022]. Contains Ordnance Survey data © Crown copyright and database right [2022].

Figure E2.2 East Devon catchments: Designated sites and Drinking Water Safeguard Zones



© Natural England copyright. Contains Ordnance Survey data © Crown copyright and database right [2022].

Figure E2.3 East Devon catchments: PWS groundwater abstractions, surface water abstractions, WwTW Surface water discharges*, & river support schemes



Contains British Geological Survey materials © UKRI [2022]. Contains Ordnance Survey data © Crown copyright and database right [2022]. Abstraction data downloaded June 2021 from Catchment Based Approach Data Hub website

Figure E2.4a East Devon catchment: Surface Water Abstraction by Sector (total, MI/d)

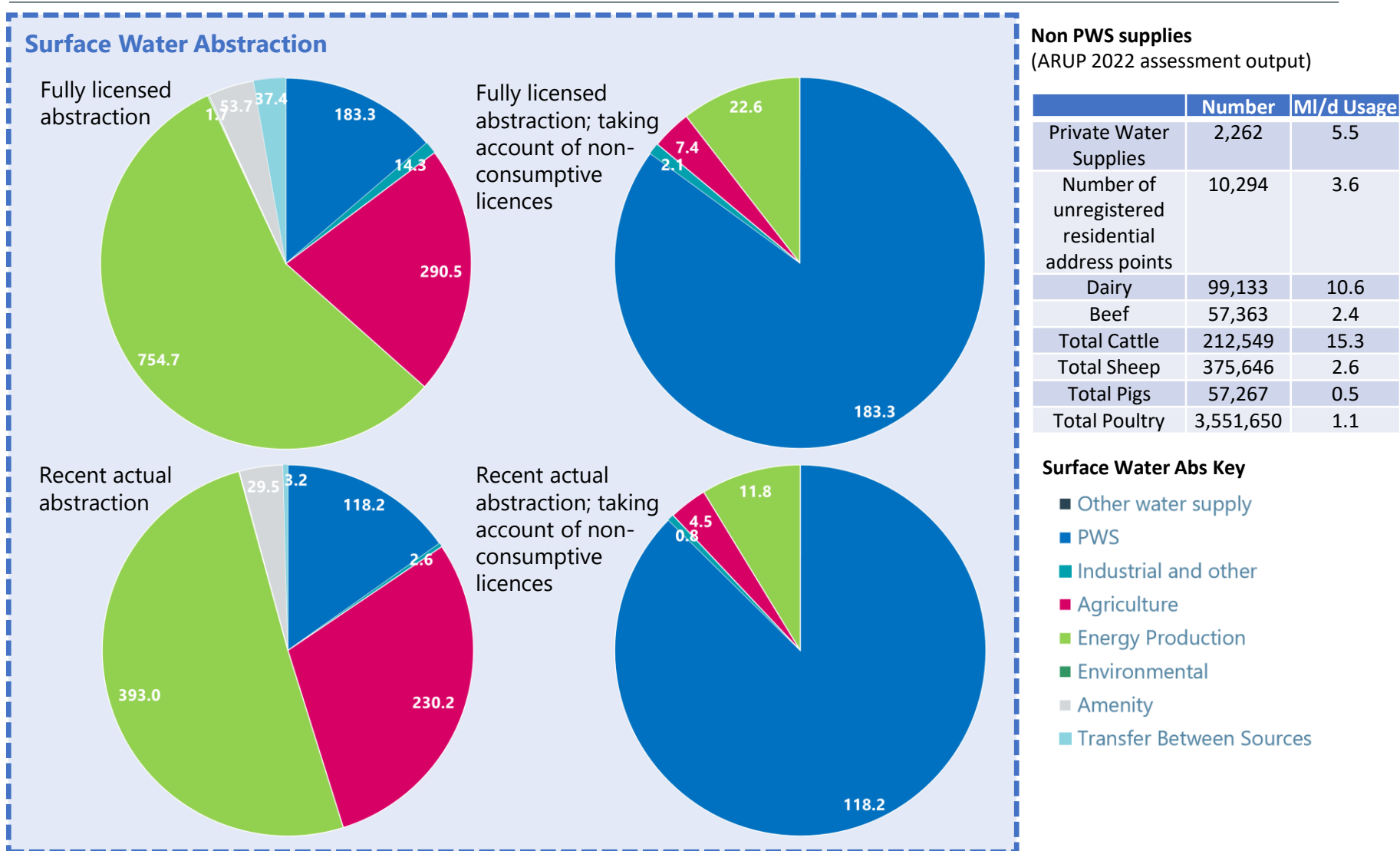


Figure E2.4b East Devon catchment: Groundwater Abstraction by Sector (total, MI/d)

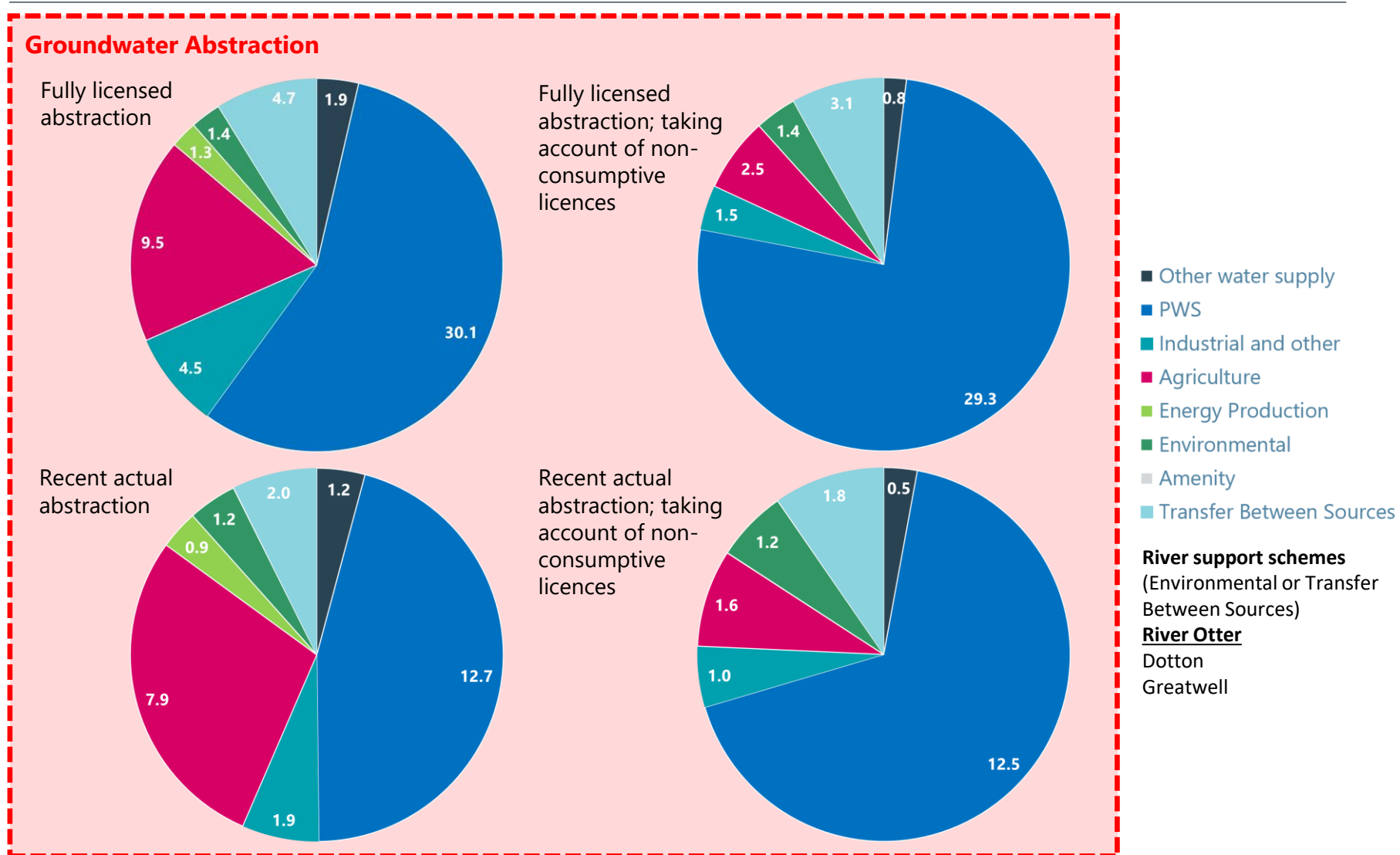
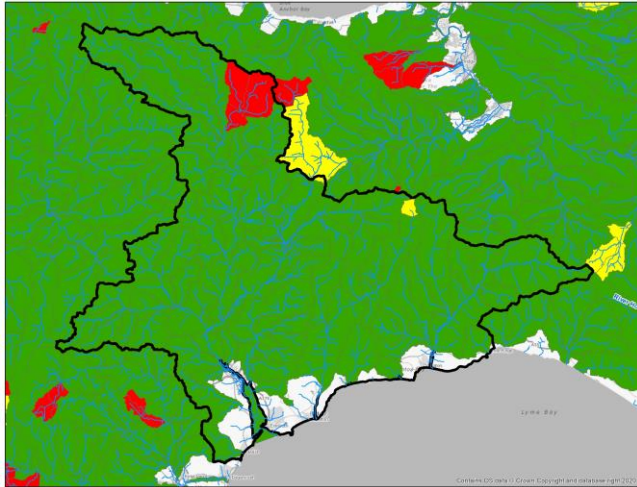
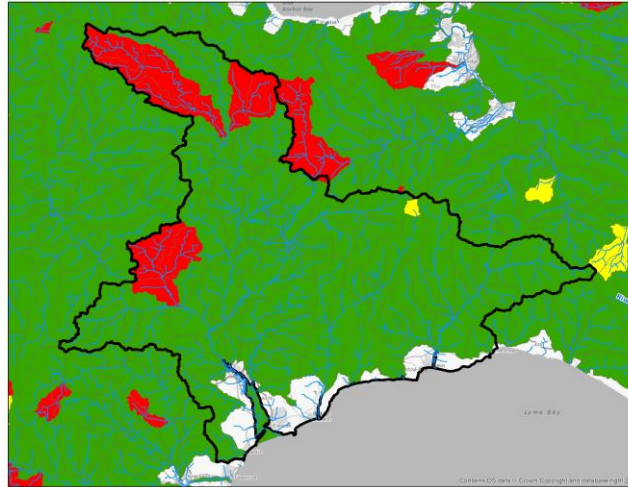


Figure E2.5 Environment Agency water resource availability at Q30, Q50, Q70, Q95 (Cycle 2, last updated 16 April 2021)

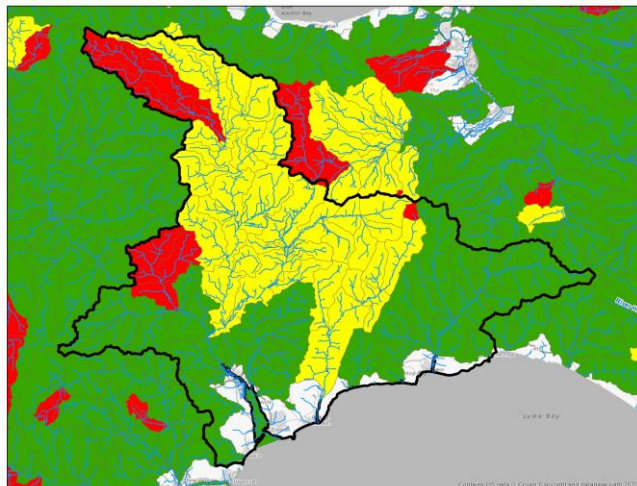
Availability at Q30 (high flows)



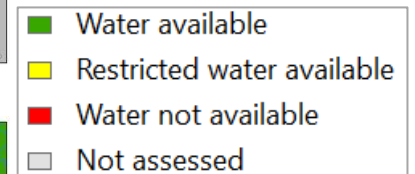
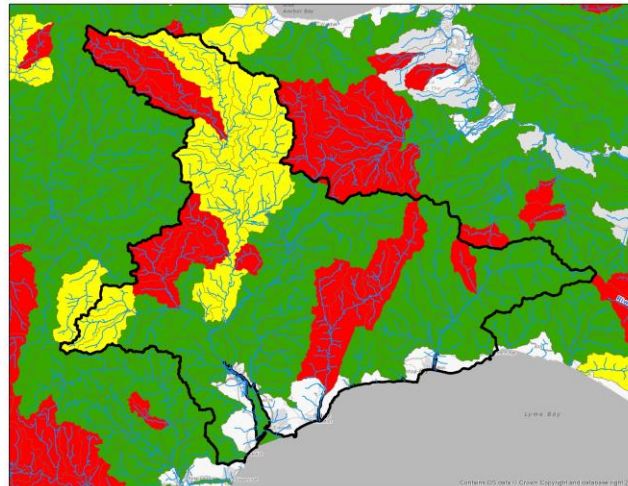
Availability at Q50 (moderate flows)



Availability at Q70 (low flows)

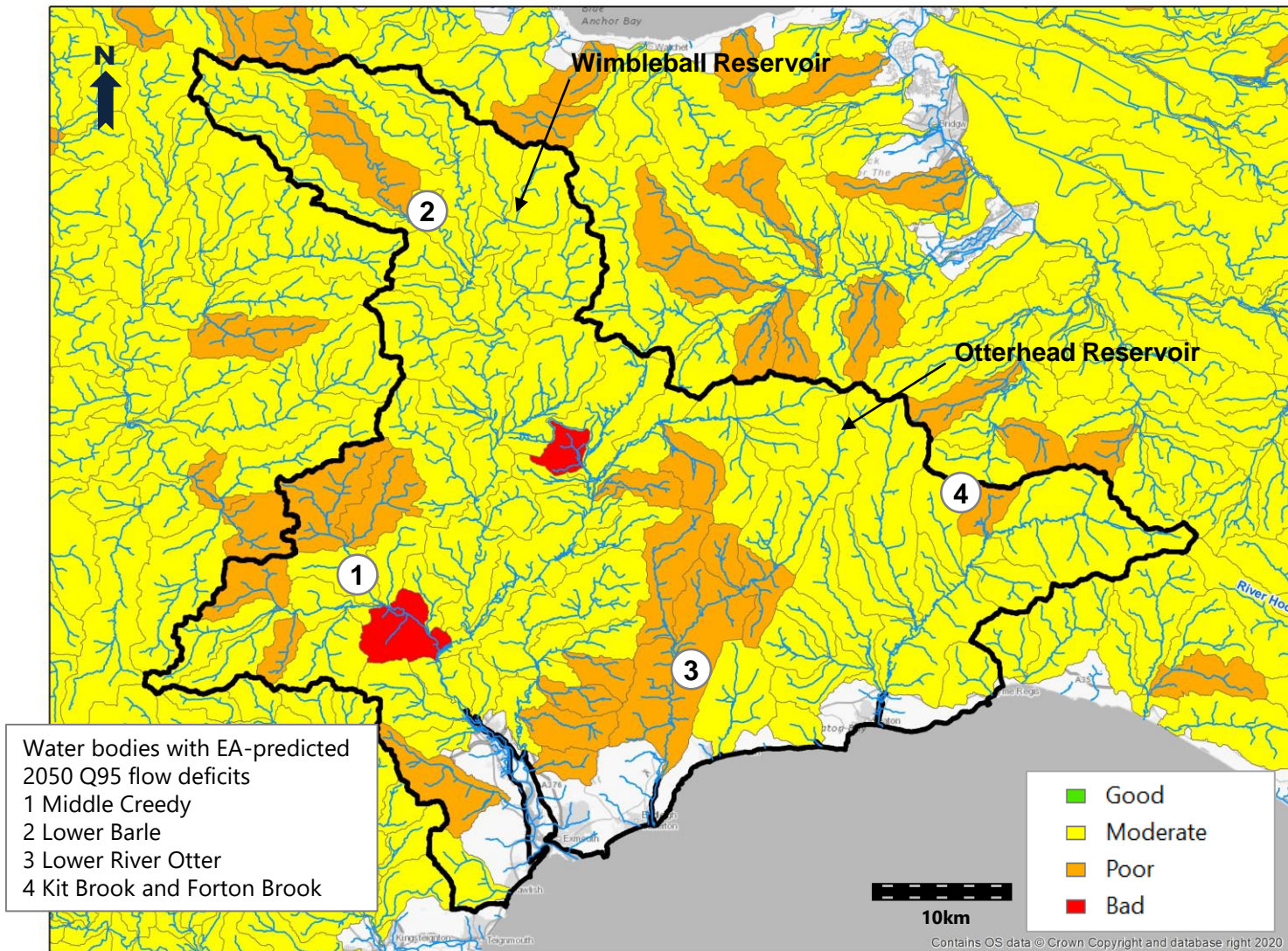


Availability at Q95 (very low flows)



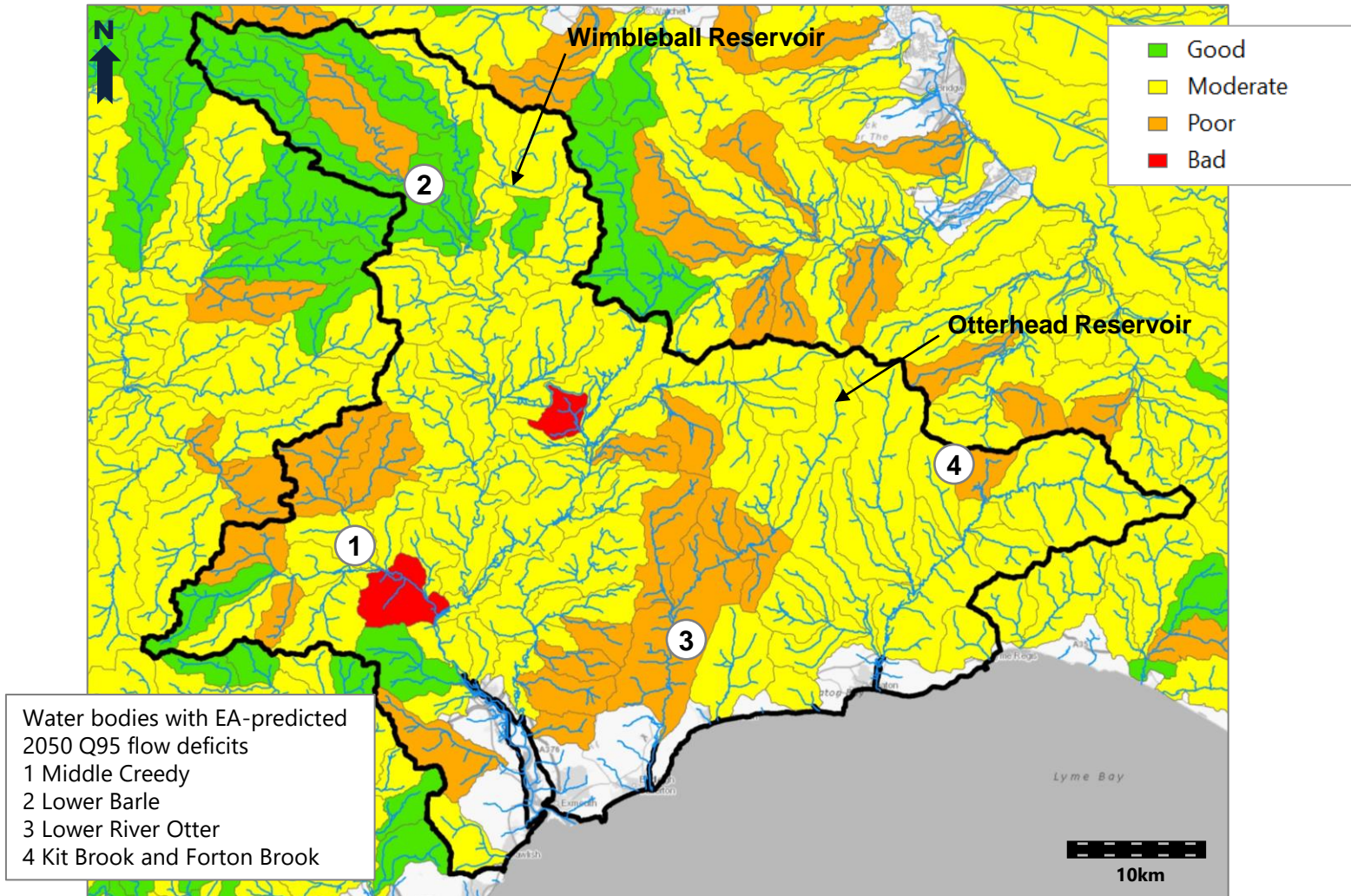
Contains public sector information licensed under the Open Government Licence v3.0. © Crown Copyright 2022

Figure E2.6 WFD water body overall status (chemical + ecological, Cycle 2, 2019)



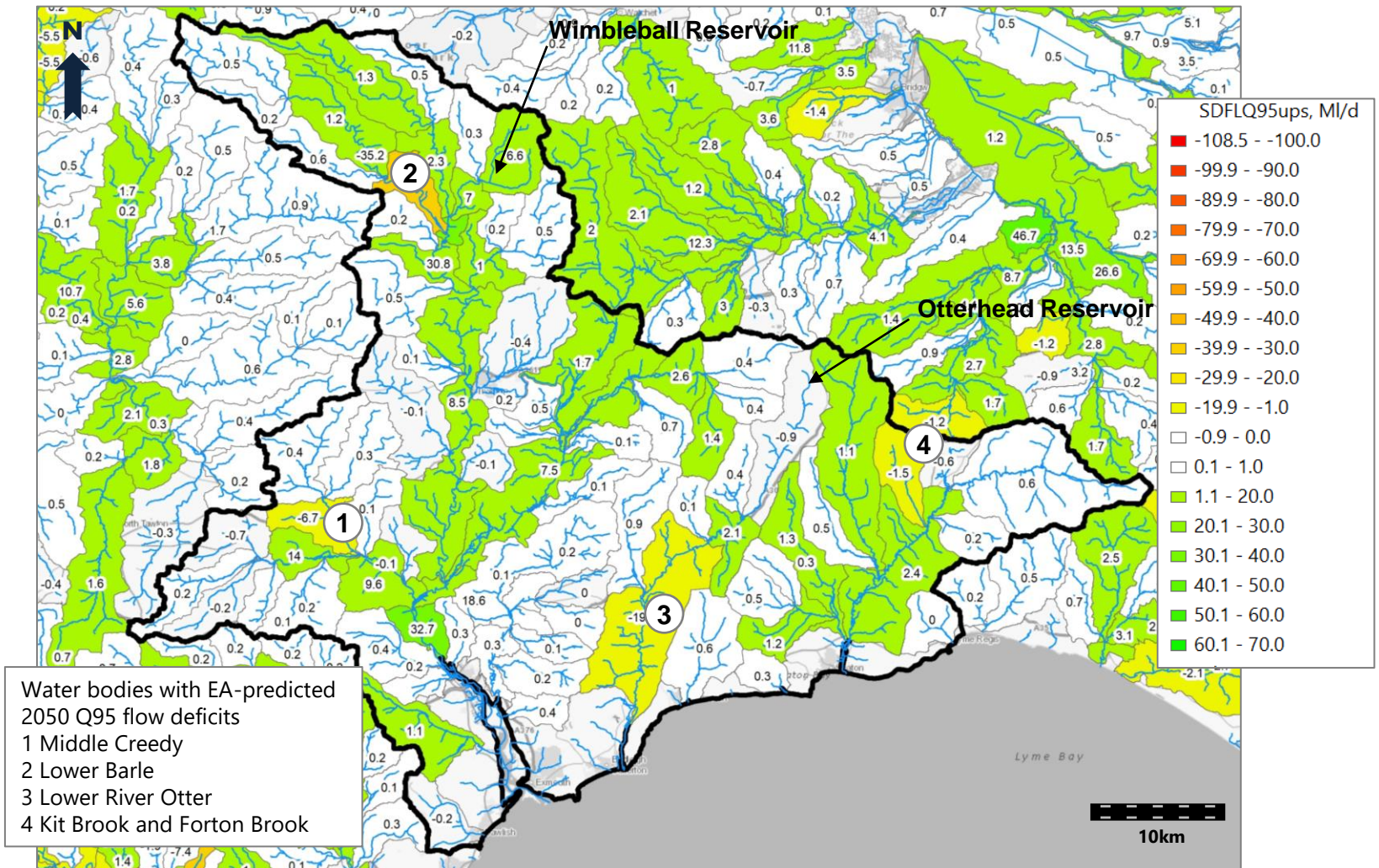
Contains public sector information licensed under the Open Government Licence v3.0. © Crown Copyright 2022

Figure E2.7 WFD water body ecological status (Cycle 2, 2019)



Contains public sector information licensed under the Open Government Licence v3.0. © Crown Copyright 2022

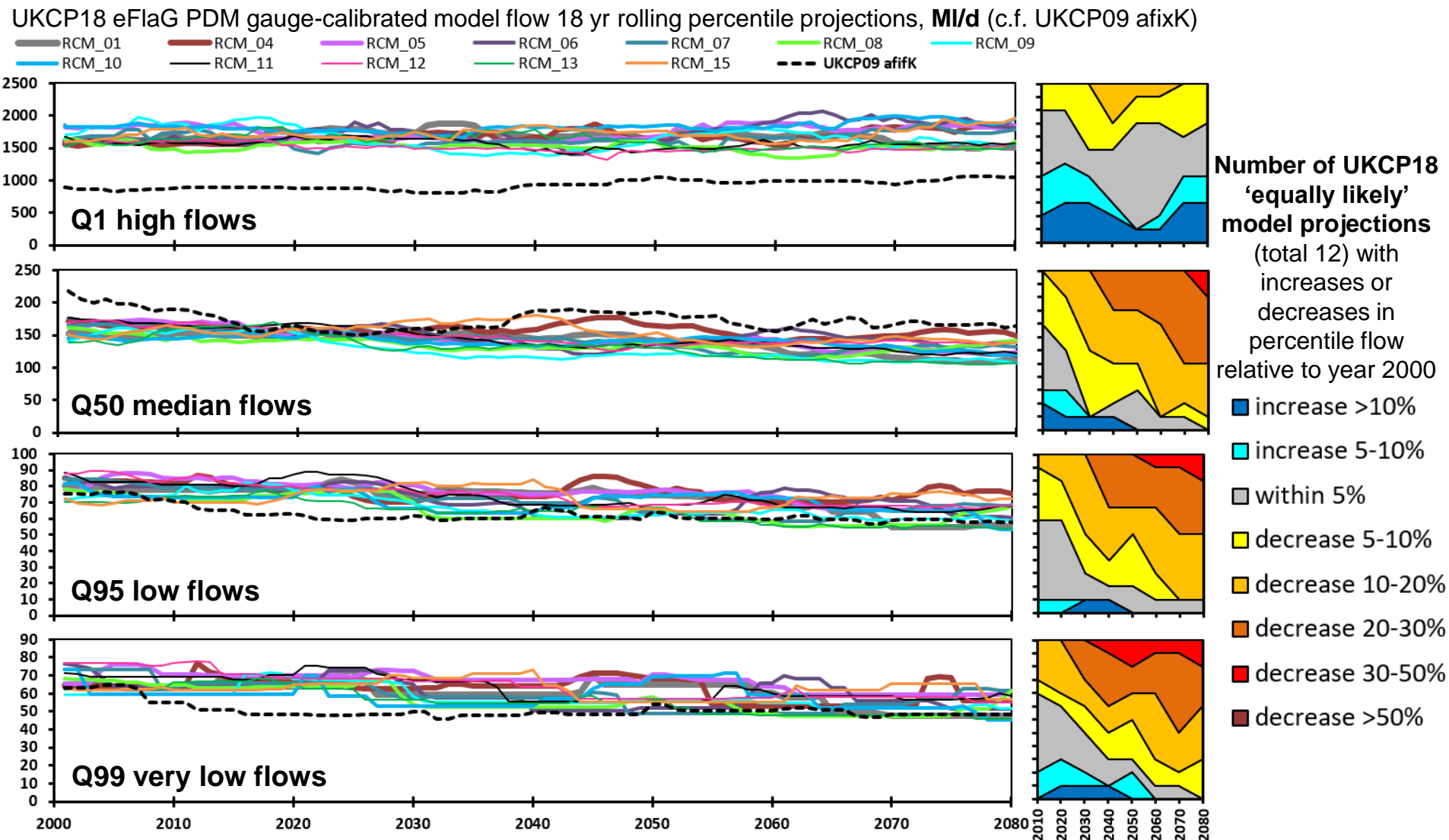
Figure E3.1 EA predicted fully licensed 2050 flow surpluses and flow deficits (MI/d) for water bodies under Q95 low flow conditions (enhanced scenario)



Data from EA's National Framework modelling in 2020

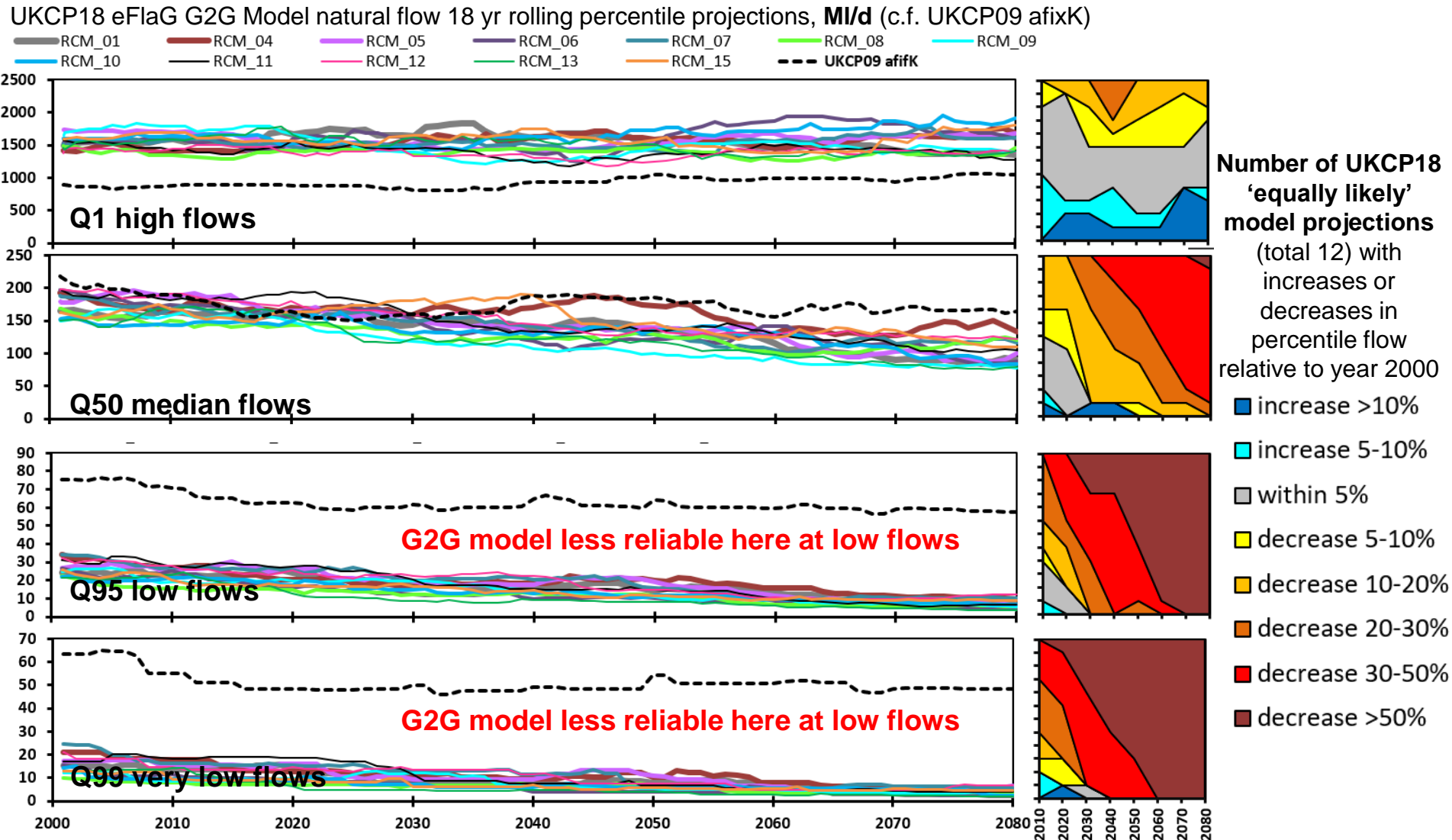
Annex E: East Devon pilot catchment plan to increase future water supply and low flow environmental resilience
Reference 807434-WOOD-WRG-ED-FG-OW-0001_A_P01.2

Figure E3.2 Flow changes expected due to climate (Otter at Dotton): Projections from UKCP18 climate & PDM gauge-calibrated river flow models



Data source: flows from 12 possible UKCP18 regional climate models (with UKCP09 afixK natural projection for comparison): <https://eidc.ac.uk/>

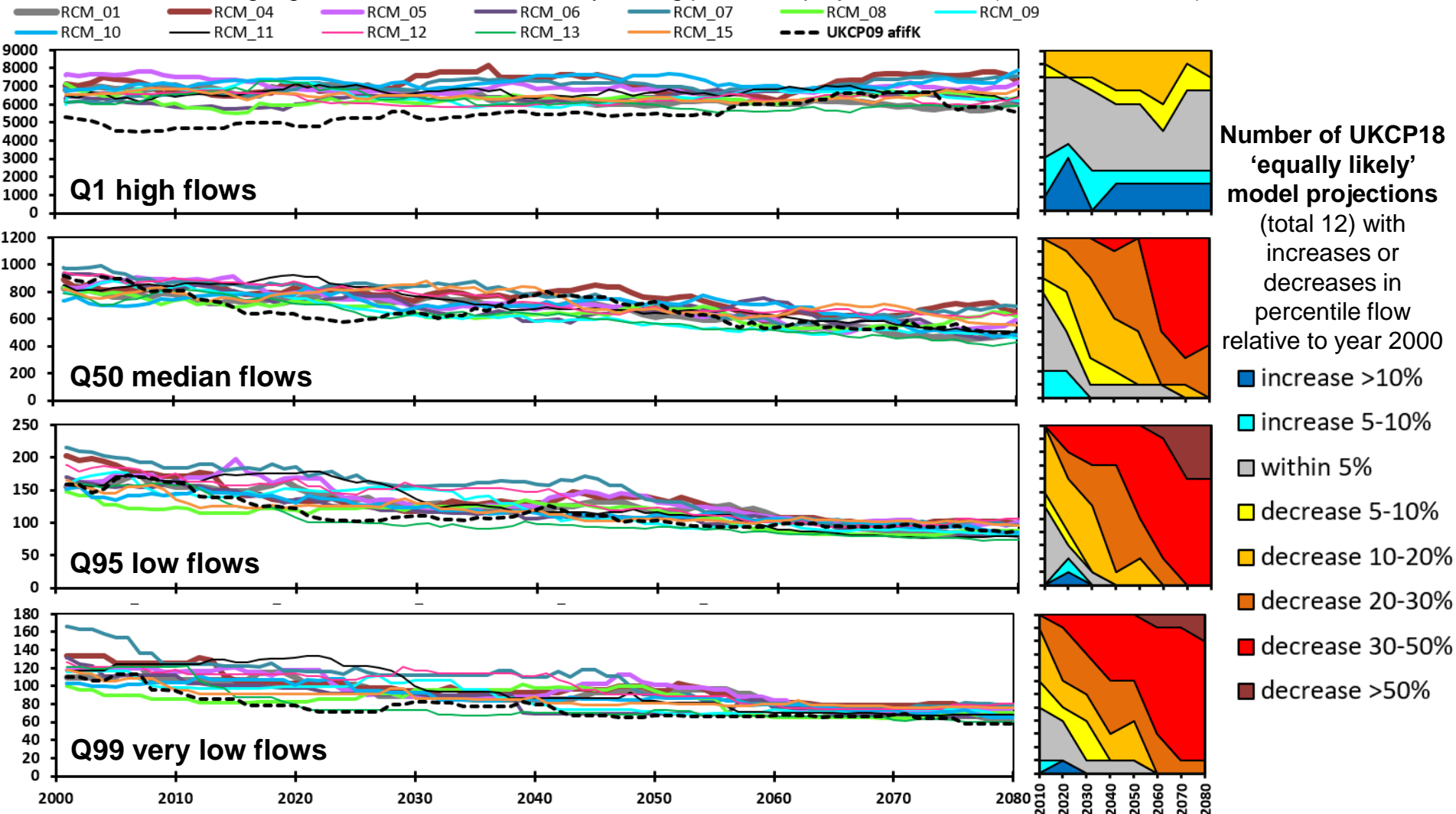
Figure E3.3 Flow changes expected due to climate (Otter at Dotton): Projections from UKCP18 climate & G2G national natural river flow models



Data source: natural flows from 12 possible UKCP18 regional climate models (with UKCP09 afifK natural projection for comparison): <https://eidc.ac.uk/>

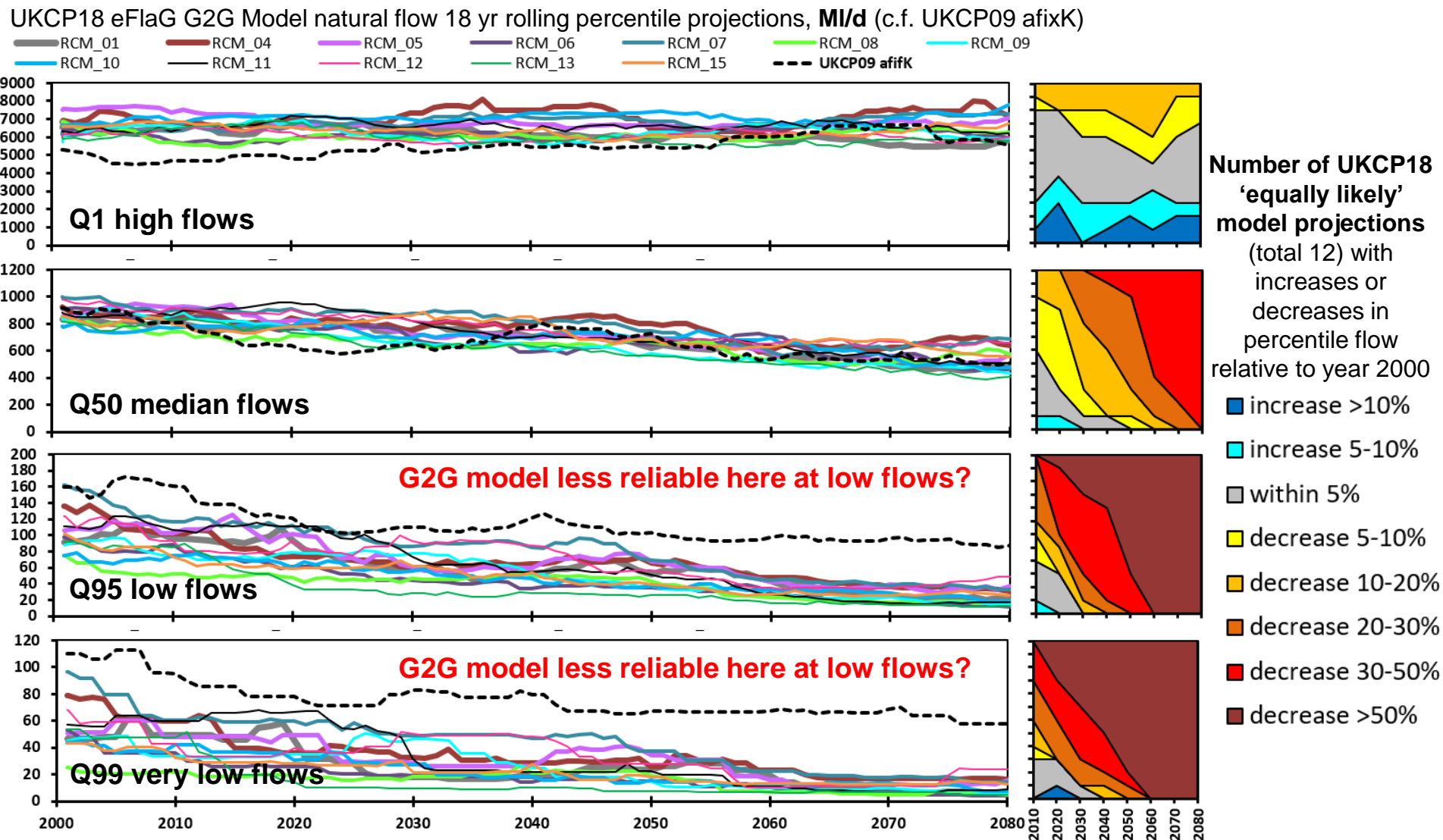
Figure E3.4 Flow changes expected due to climate (Exe at Thorverton): Projections from UKCP18 climate & PDM gauge-calibrated river flow models

UKCP18 eFlaG PDM gauge-calibrated model flow 18 yr rolling percentile projections, **MI/d** (c.f. UKCP09 afifK)



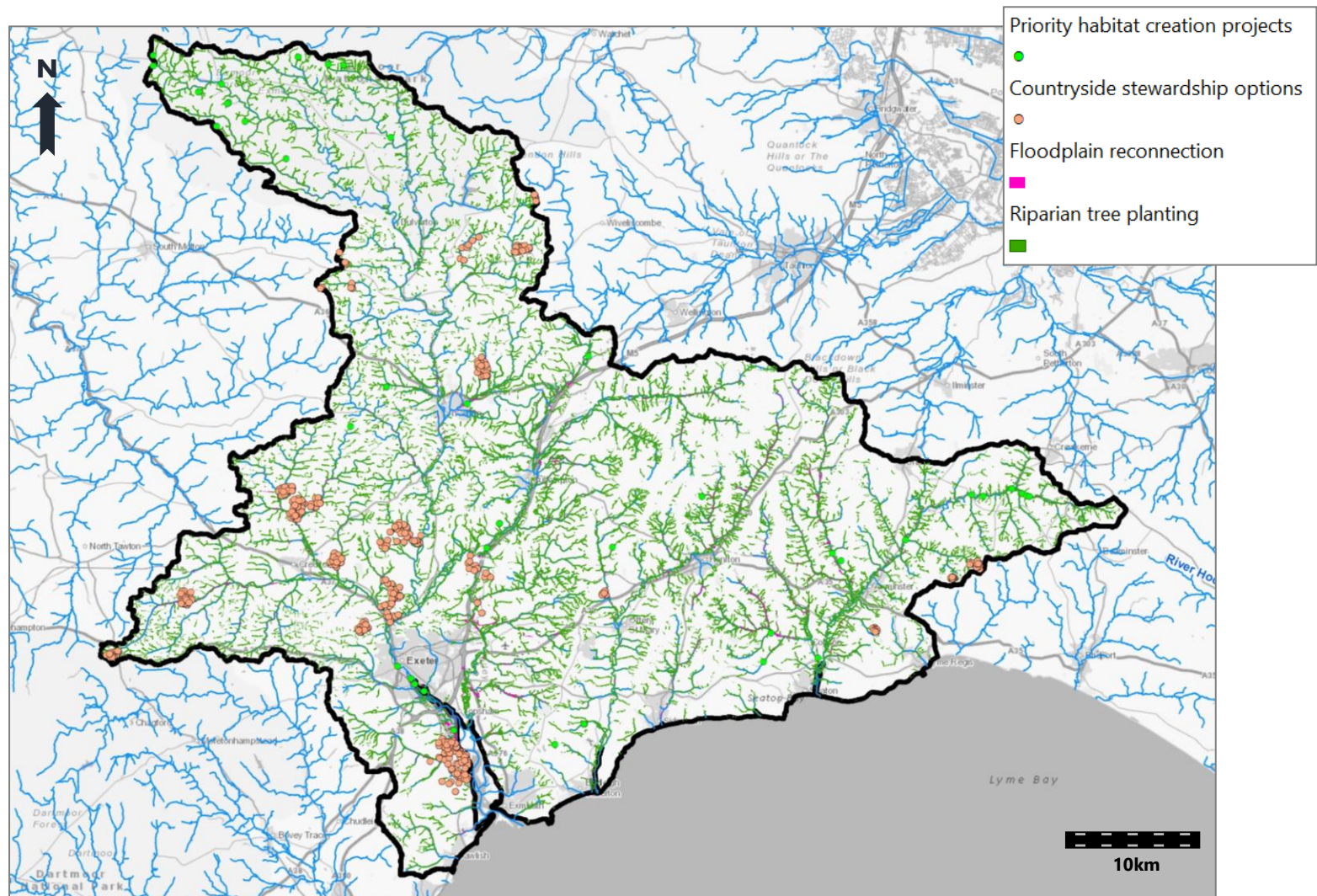
Data source: flows from 12 possible UKCP18 regional climate models (with UKCP09 afifK natural projection for comparison): <https://eidc.ac.uk/>

Figure E3.5 Flow changes expected due to climate (Exe at Thorverton): Projections from UKCP18 climate & G2G national natural river flow models



Data source: natural flows from 12 possible UKCP18 regional climate models (with UKCP09 afifK natural projection for comparison): <https://eidc.ac.uk/>

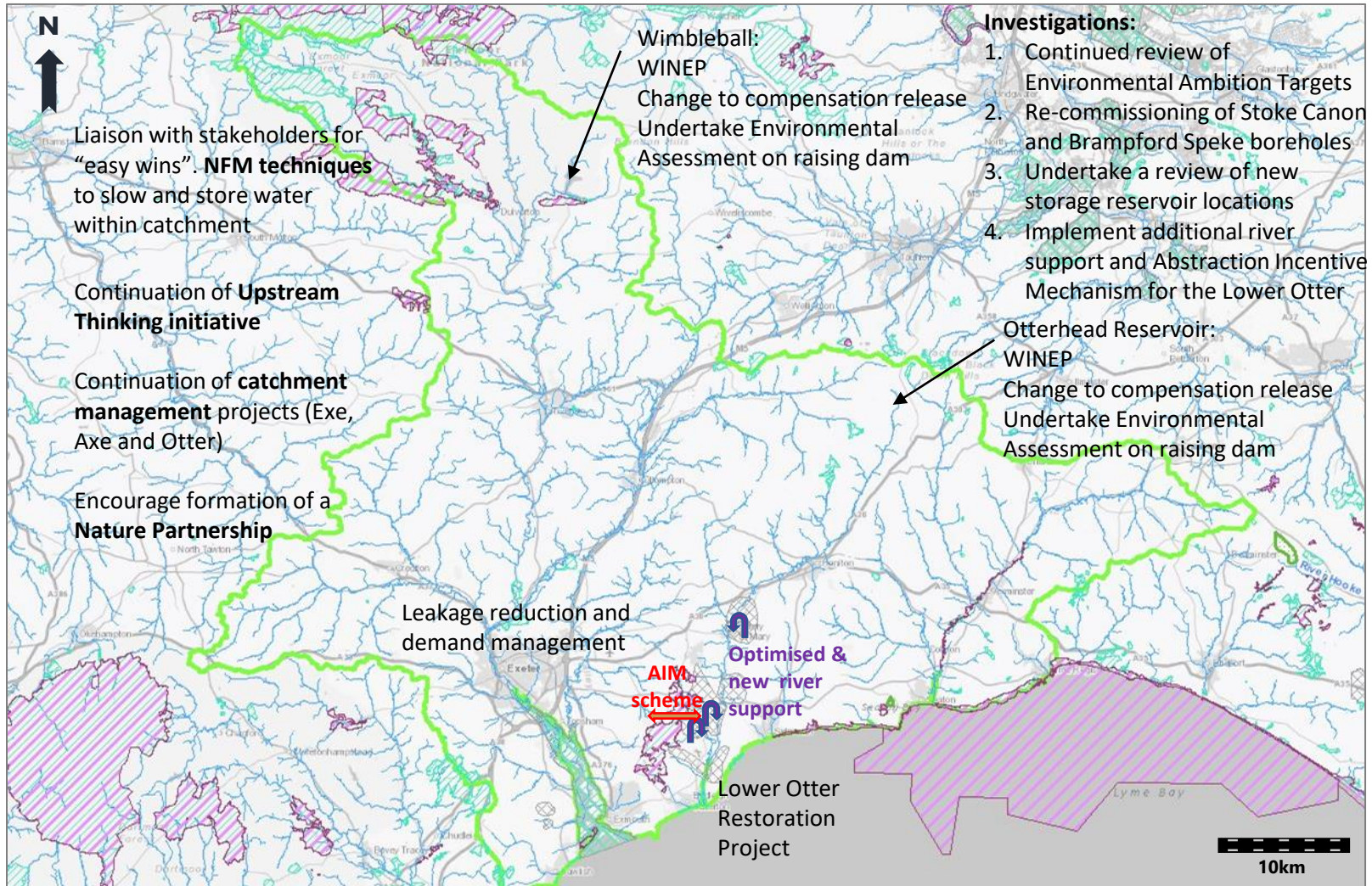
Figure E4.1 East Devon catchments CaBA opportunity mapping



Data downloaded June 2021 from Catchment Based Approach Data Hub website

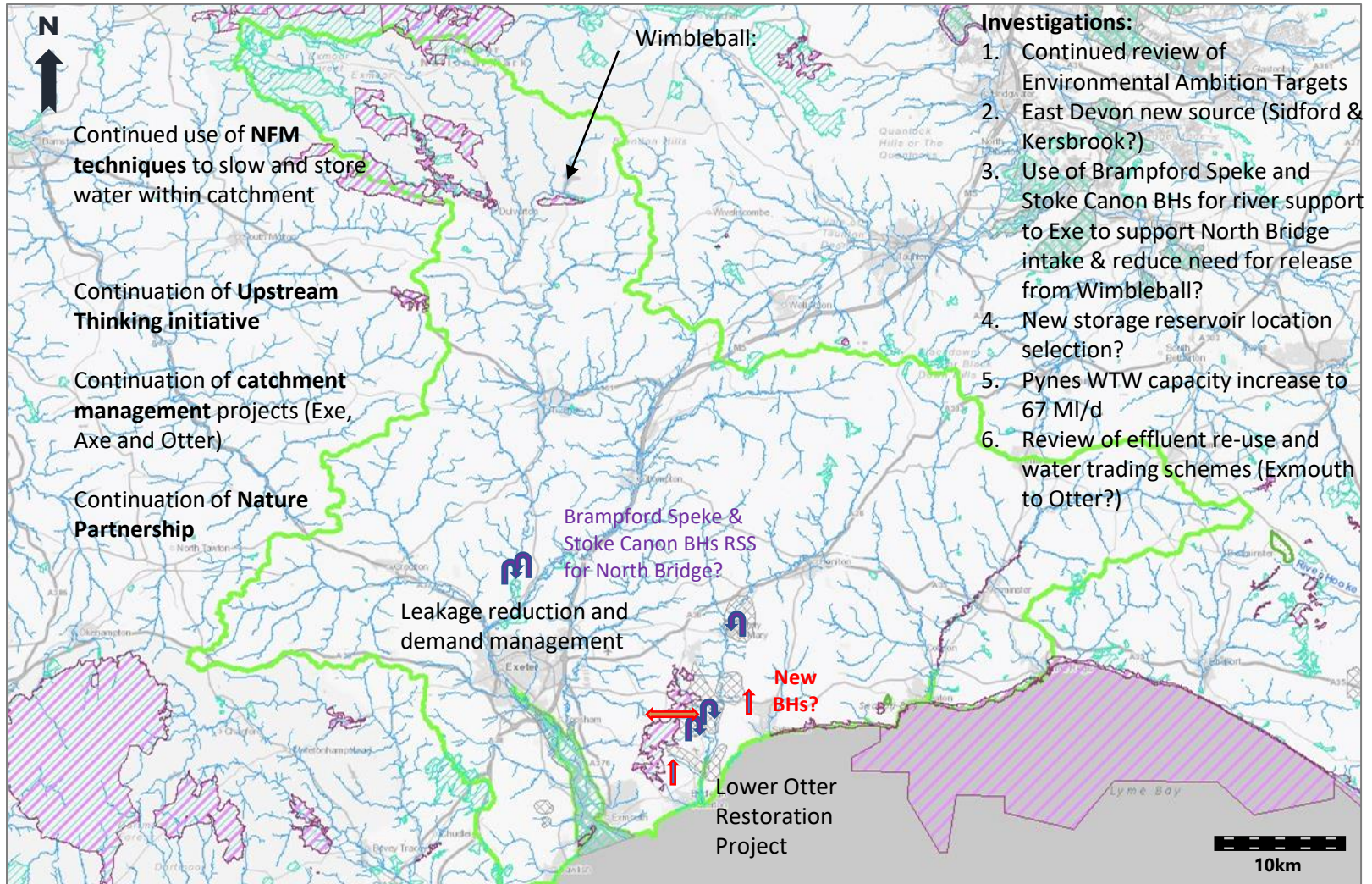
Annex E: East Devon pilot catchment plan to increase future water supply and low flow environmental resilience
Reference 807434-WOOD-WRG-ED-FG-OW-0001_A_P01.2

Figure E4.2 Short term 2030 catchment measures: East Devon



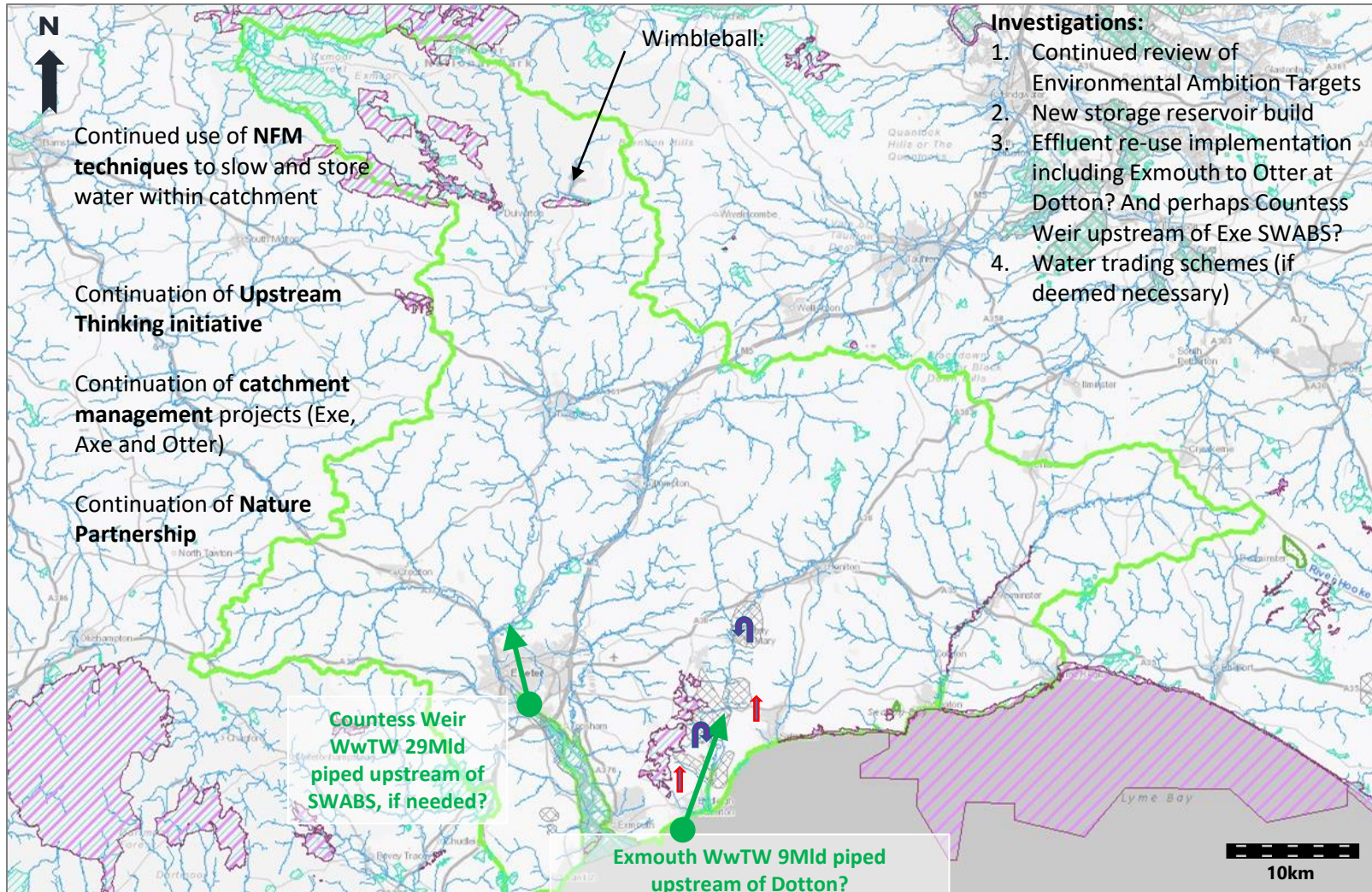
© Natural England copyright. Contains Ordnance Survey data © Crown copyright and database right [2022].

Figure E4.2 Medium term 2040 catchment measures: East Devon



© Natural England copyright. Contains Ordnance Survey data © Crown copyright and database right [2022].

Figure E4.2 Long term 2050 catchment measures: East Devon



© Natural England copyright. Contains Ordnance Survey data © Crown copyright and database right [2022].